

## **Introducing the North Thompson Sustainable Watershed Atlas to Local and First Nation Governments**

**This document has been prepared in conjunction with**

- **“A Quick Start Guide to the North Thompson Sustainable Watershed Atlas” which provides a quick guide to using the atlas and**
- **“North Thompson Sustainable Watershed Atlas Map Layers” which lists approximately 160 map layers found in the atlas and indicates the folders where they are located as well as the map scale range in which they are visible.**

**Government staffs are encouraged to review the Quick Start Guide, scan through the Map Layers list for information layers that can support decision-making, and start using the atlas. The examples that follow show a small sample of the types of maps you can prepare by selecting combinations of map layers for display.**

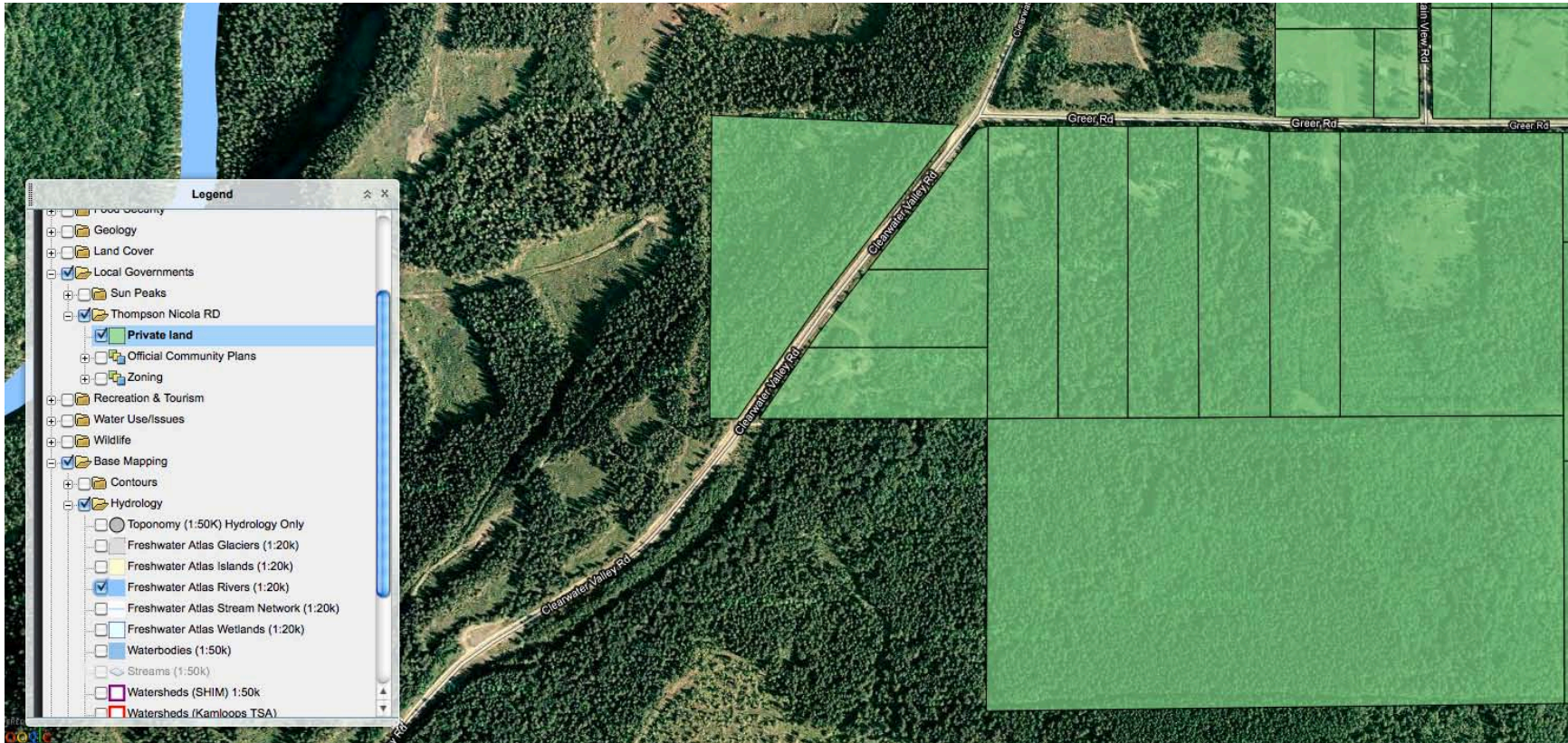
**The North Thompson Sustainable Watershed Atlas allows local and First Nation governments to view and print map information at detailed scales and strategic scales. This information can support governments undertaking operational planning within municipalities or Indian Reserves such as locating a community facility, processing a development approval, or mitigating potential impacts from flooding.**

**This information can also support strategic scale planning within municipalities, rural areas and traditional territories including land use planning and consultation processes.**

**The following pages show various “screen shots” of various combinations of map layers and scales from the North Thompson Sustainable Watershed Atlas. Reviewing these screenshot examples may help you get started. The map layers used in the preparation of the map in each “screen shot” are indicated.**

## Screenshot #1

### Investigating Land Status - Clearwater Valley Road

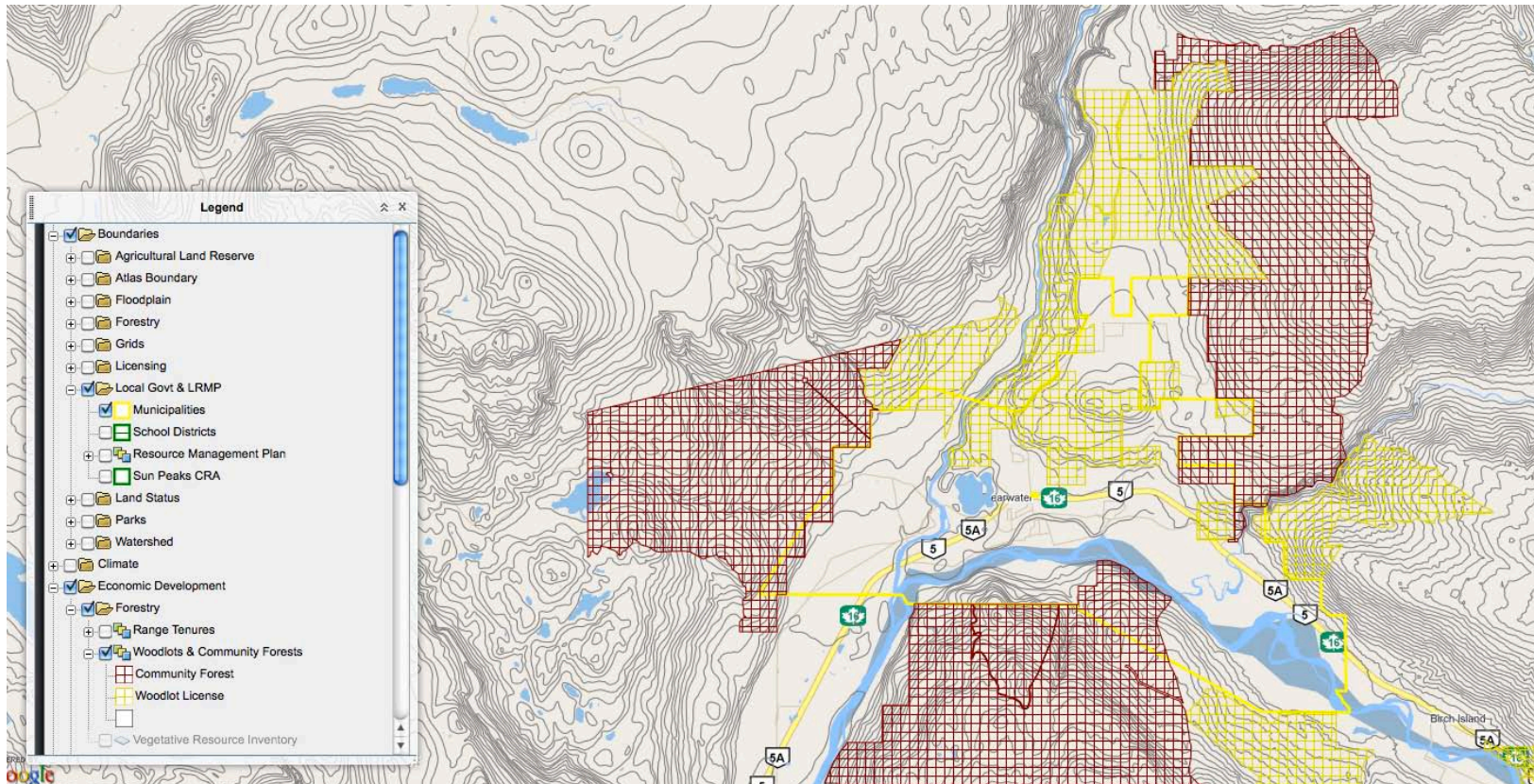


#### Map Layers:

- **Google Maps Satellite layer**
- **Private land**
- **Freshwater Atlas Rivers 1:20K**

## Screenshot #2

### Investigating Forest Tenures in and near District of Clearwater Boundaries

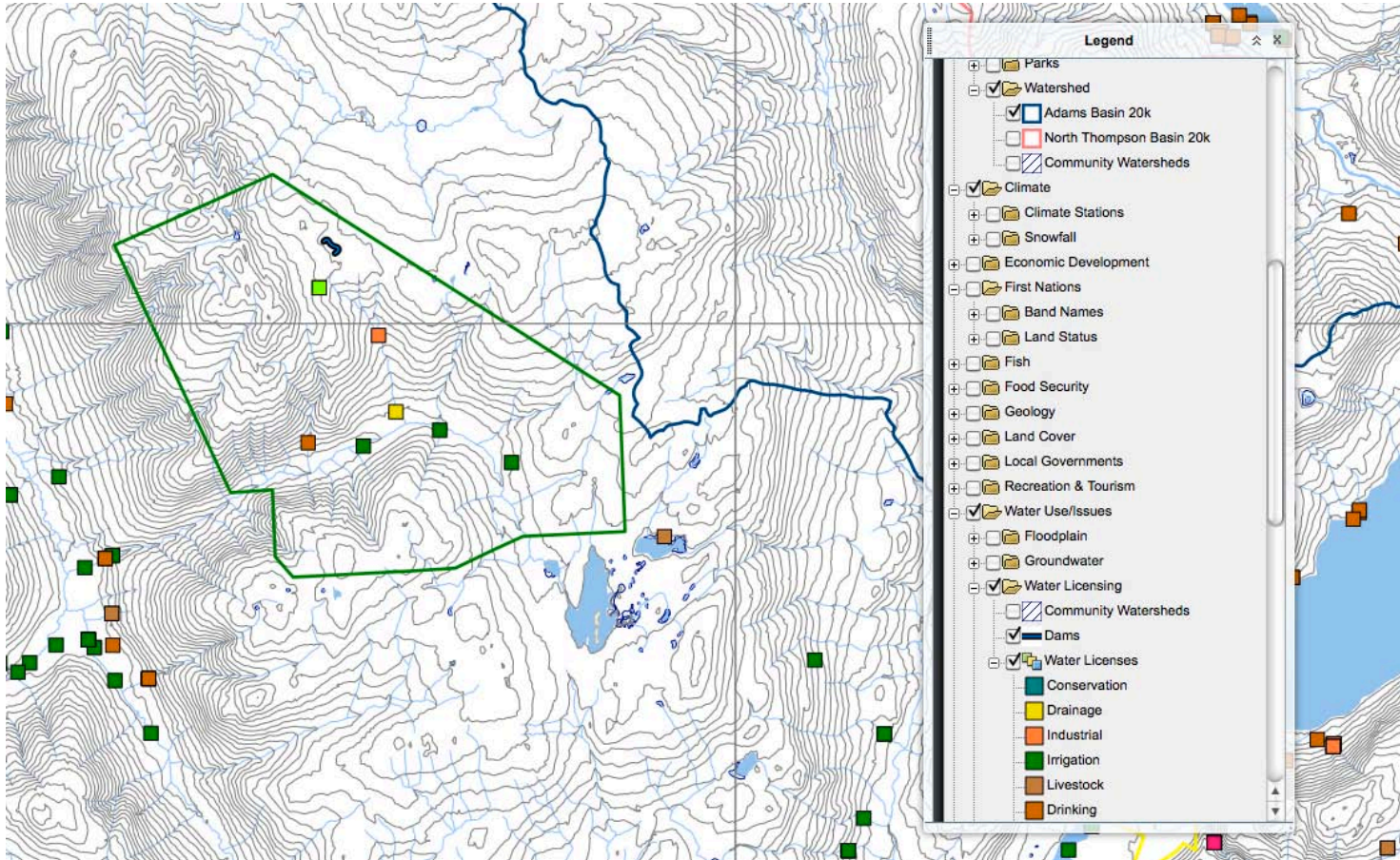


#### Map Layers:

- **Google Streets Maps**
- **1:50,000 contours,**
- **Woodlots and Community Forests**
- **Municipalities**

### Screenshot #3

### Investigating Major Watersheds and Water Licences within boundary of Sun Peaks

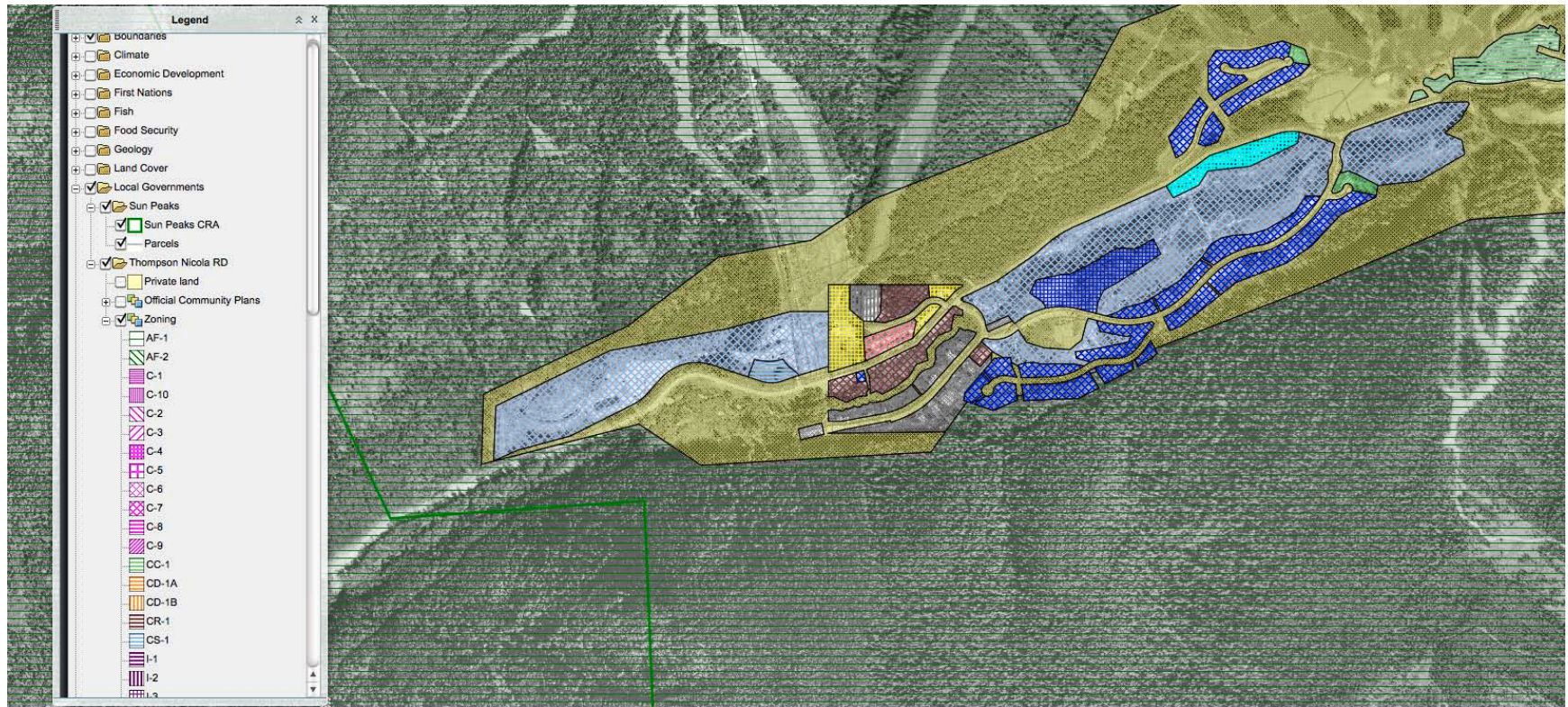


#### Map Layers:

- 1:20,000 Grid
- Sun Peaks CRA
- Adams basin
- Dams
- Water Licenses
- Base layers

## Screenshot #4

### Investigating the zoning of parcels at Sun Peaks

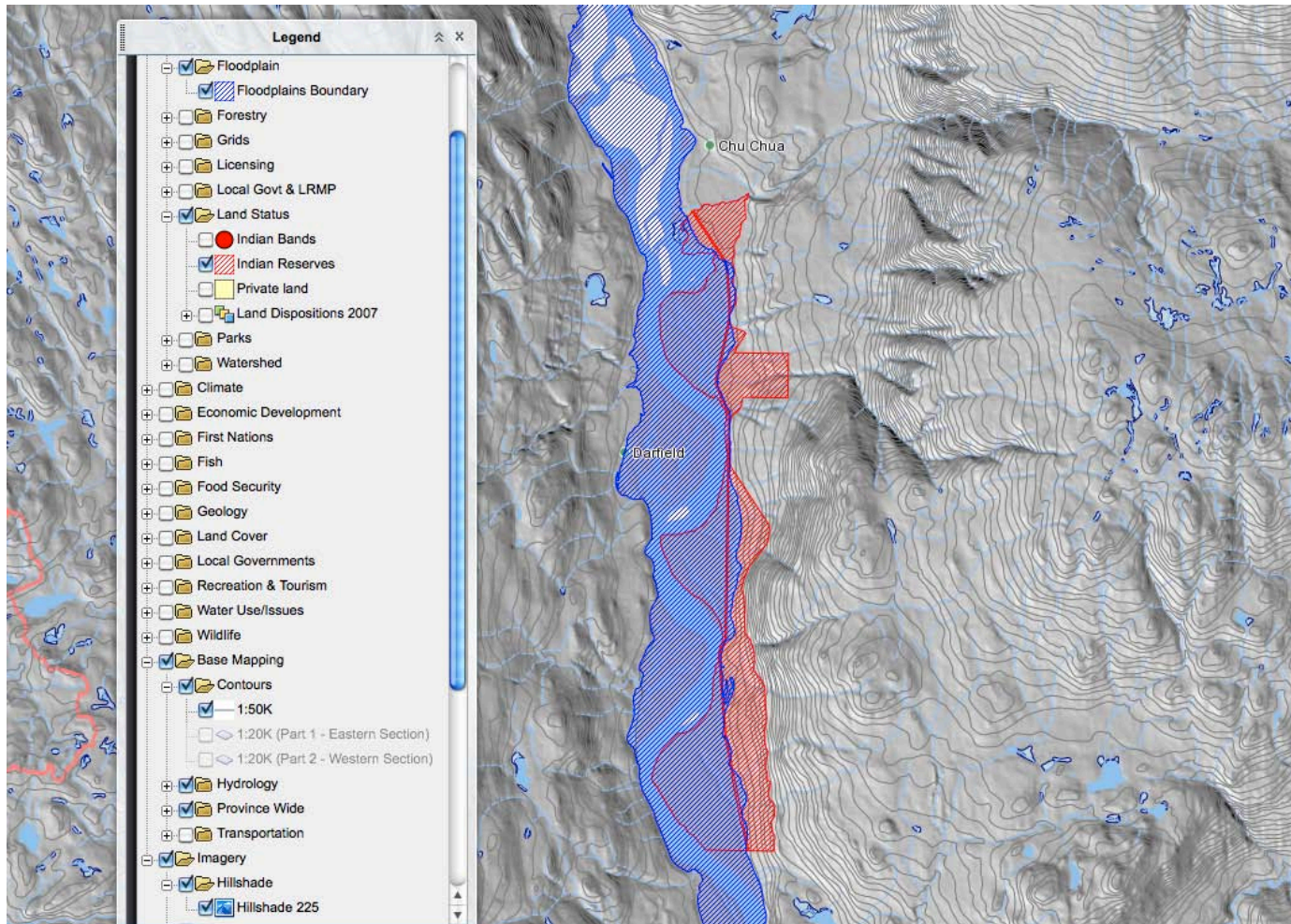


#### Map Layers:

- zoning
- TRIM ortho-mosaic
- Sun Peaks CRA
- Sun Peaks parcels

## Screenshot #5

Exploring the extent of the Simpcw reserve at Chu Chua and the floodplain of the North Thompson

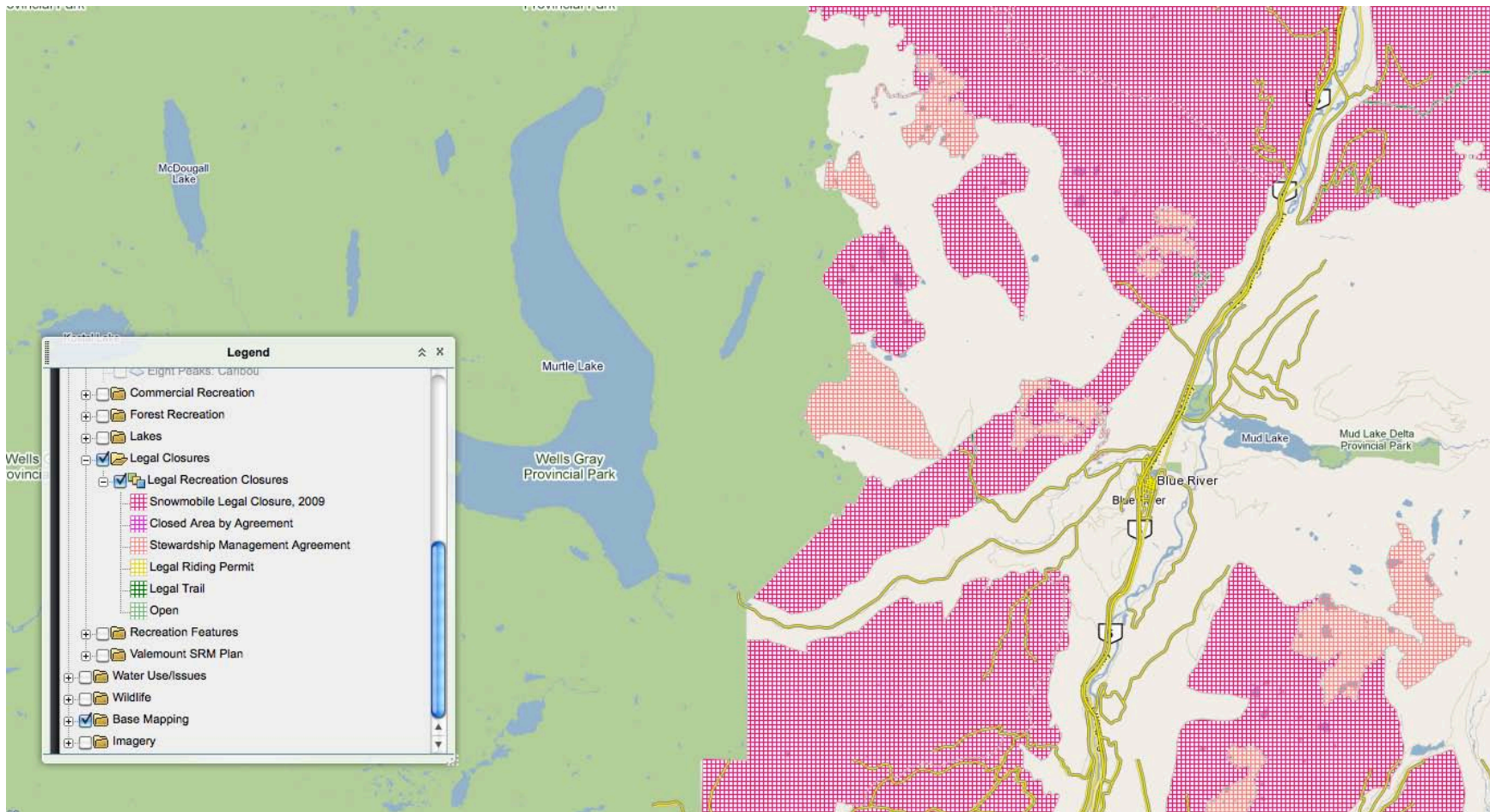


### Map Layers:

- Floodplain Boundary
- Indian Reserve
- Hillshade 225
- Contours

## Screenshot #6

### Exploring the extent of legal snowmobile closure areas in the vicinity of Blue River



#### Map Layers:

- Google Maps
- Legal recreation closures

## Screenshot #7

What lands adjacent to the community of Little Fort are within the Agricultural Land Reserve?



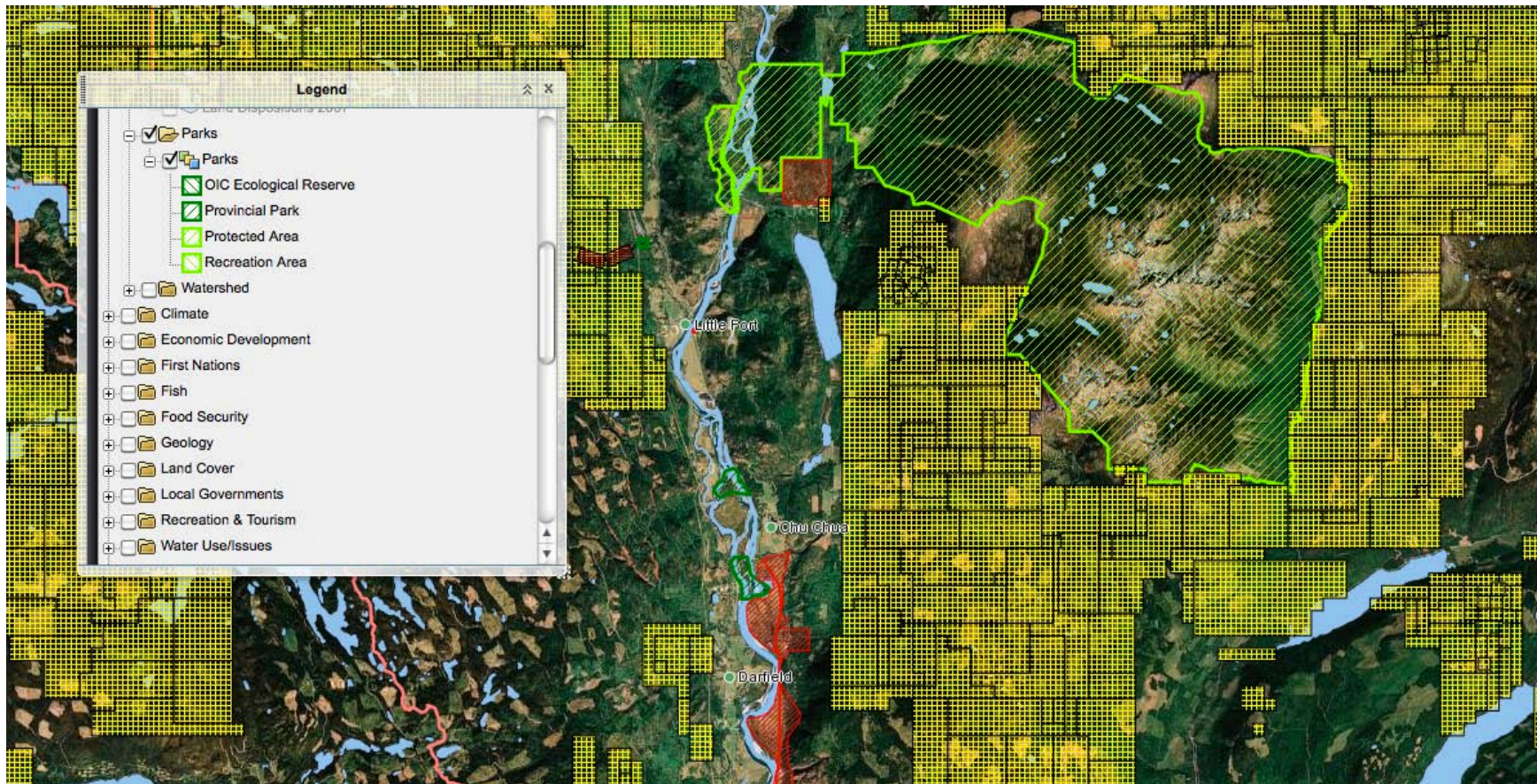
### Map Layers:

- **Agricultural Land Reserve**
- **Barriere-Clearwater Ortho 2009**



## Screenshot #8

Exploring the distribution of mineral claims, Provincial Parks and Indian Reserves in the vicinity of Little Fort.

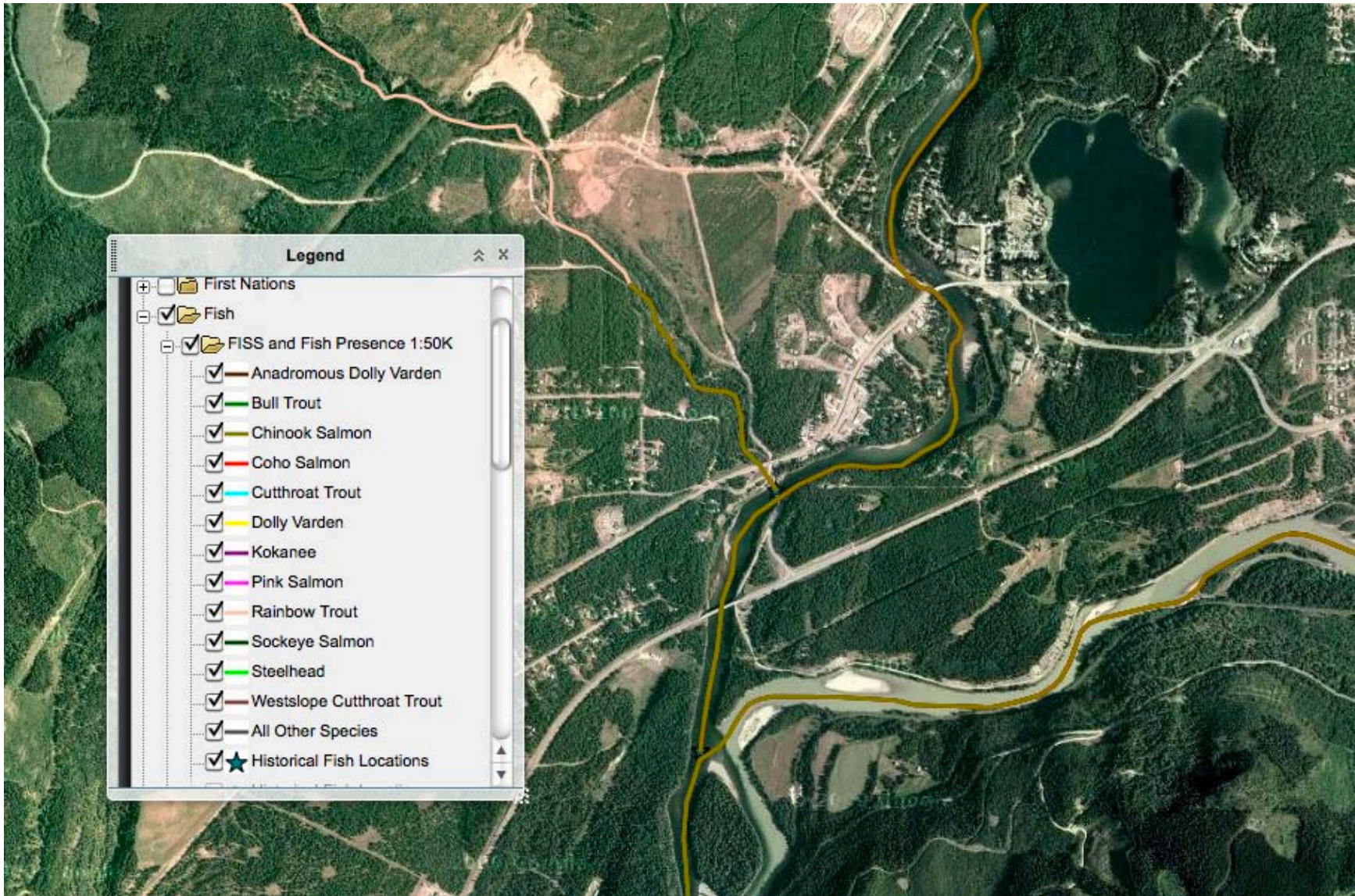


### Map Layers:

- Google Satellite
- Parks
- Mineral/Placer Claims
- Indian Reserves

## Screenshot #9

### Exploring the presence of various fish species near the confluence of the Clearwater and North Thompson Rivers



Map Layers: Google Satellite and FISS and Fish Presence