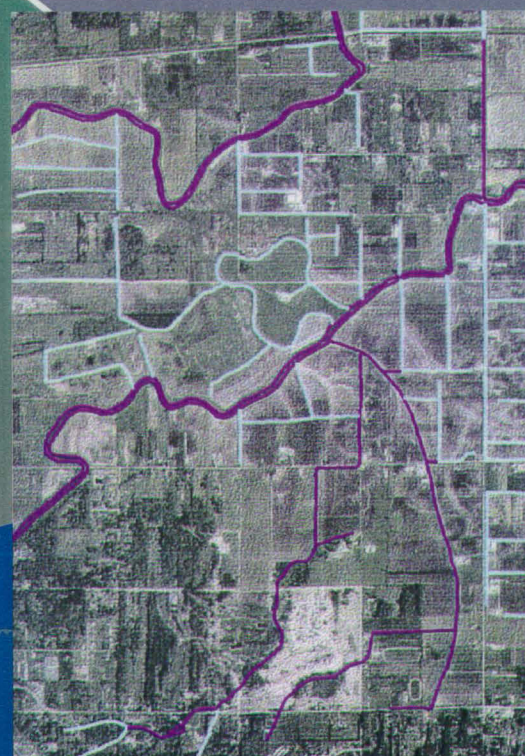


DFO - Library / MPO - Bibliothèque



02027268



# Lower Fraser River Stream Inventory Atlas

Lower Fraser Valley Stream Review, Volume II

*A co-operative project:*



Fisheries & Oceans  
Canada

Fraser River  
Action Plan

Pêche et Océans  
Canada

Plan d'action  
du Fraser

Canada



BRITISH  
COLUMBIA

First Edition: September, 1996  
Second Edition: March, 1998

QH  
541.5  
S7  
L684  
1998  
c.2  
Atlas



---

# **LOWER FRASER RIVER STREAM INVENTORY ATLAS**

**First edition: September 1996**

**Second edition: March 1998 (with Stream Name maps)**

**Habitat and Enhancement Branch**

**Fisheries and Oceans Canada**

**360 - 555 W. Hastings St.**

**Vancouver, B.C.**

**V6B 5G3**

LIBRARY  
FISHERIES AND OCEANS CANADA/  
200 - 401 BURRARD ST.  
VANCOUVER, B.C. V6C 3S4  
604-666-3851

---



## PREFACE

The Lower Mainland of B.C. faces tremendous pressures to respond to the demands of growth and development. Aquatic and terrestrial environmentally sensitive areas have been, and continue to be, impacted. Since knowledge of the location of aquatic features can help to protect them, the **Lower Fraser River Stream Inventory Atlas** has been produced. It provides maps that show the location of many streams in the Lower Mainland, and includes a fish presence layer. The information in this Atlas has been compiled to assist all involved in the planning and management of land and water resources.

It is hoped that this document (and its companion publications) will be used by all potential partners to better steward valuable public resources, and direct development away from environmentally sensitive aquatic areas. To assist stewardship efforts, the Fraser River Action Plan (Department of Fisheries and Oceans) has produced this document, which is part of a three volume package of information on streams of the Lower Fraser Valley. The three volumes in the **Lower Fraser Valley Stream Review** series include:

**Volume 1: Lower Fraser Valley Streams Strategic Review, 1997 (1998)\***

A comprehensive 450 page review of salmon bearing streams in the Lower Fraser Valley. Contains maps and appendices (watershed codes, escapement data, stream hydrographs).

**Volume 2: Lower Fraser River Stream Inventory Atlas** (First edition, September 1996; Second edition, with Stream Name Maps, 1998)\*

Contains 47 orthophoto maps (and accompanying stream name index maps) with TRIM overlay, showing fish presence.

*The Atlas, individual maps, or black and white TRIM sheets, can be purchased from: Archetype Print Ltd., #459-409 Granville Street, Vancouver, B.C., V6C 1T2, ph: 604-602-0282; fax: 604-602-0283.*

**Volume 3: Wild, Threatened, Endangered and Lost Streams of the Lower Fraser Valley - Summary Report, 1997 (1998)**

A 40 page report on the classification of approximately 760 streams in the Lower Fraser Valley as lost, endangered, threatened or wild. Includes a classified streams map of the Lower Fraser Valley.

*For copies of Volumes 1 and 3, or for further information, contact:*

Habitat and Enhancement Branch  
Fisheries and Oceans Canada  
360 - 555 W. Hastings St.  
Vancouver, B.C. V6B 5G3  
fax: 604-666-0417

**\*Note:** For more information about fish distribution, stream mapping, the Streamkeepers database and Urban Salmon Initiative, a Community Directory and Stream Survey Tracking System, see the Fish Habitat Inventory and Information Program on the Fisheries and Oceans Canada (Pacific Region) Internet site, at <http://habitat.pac.dfo.ca>.



## INTRODUCTION

### BACKGROUND

The **Lower Fraser River Stream Inventory Atlas** was developed by the Fraser River Action Plan, Department of Fisheries and Oceans (DFO). Information for the Atlas was compiled from the DFO/BC Environment Fisheries Information Summary System (FISS), consultants' reports, scientific and technical studies, agency files and other unpublished sources.

The Atlas is intended to be used as a resource for land and water use planning in the Lower Mainland. It is a compilation of annotated watercourse maps which can be used by local governments, land developers, resource management agencies and the public to identify fish habitat areas.

### MAP PRODUCTS

#### **First Edition: September, 1996.**

This document contains fish presence maps (which are TRIM based--Terrestrial Resource Information Map--1:20,000) which are overlayed on a 1995 colour orthophoto backdrop and presented at a 1:50,000 scale (11 x 17 in). Where orthophoto coverage was not available for certain areas, the satellite image of the Greater Vancouver Regional District was incorporated (at 10 m pixel); image quality varies due to tiling of image during production. Black and white TRIM (1:20,000) map sheets (24 x 36 in) are also available and can be used in conjunction with the Atlas product.

#### **Second Edition: March, 1998. Contains Stream Name Maps.**

This issue has been reprinted with a facing page showing stream names and names of major landmarks (towns, cities, geographic features) to provide references for geographic location. The 1:50,000 BC Watershed Atlas has been used to provide the base map for these blue line Stream Name Maps. Due to differences in scale, some aquatic features indicated on the orthophotos with TRIM overlay may be absent, not completely represented, or may be only an approximate match on the Stream Name Maps.

### FUTURE DEVELOPMENT OF ATLAS

#### **Information Formats**

While the current product is available only in hard copy, DFO and BC Environment are working together to make this data available on the Internet (<http://habitat.pac.dfo.ca>).

#### **Updating Information**

The information represented in the fish presence layer of this Atlas is currently being refined and improved. Resource management and protection agencies, local governments, Streamkeepers and displaced fishers in the Lower Fraser Valley are working together to map and ground truth streams,



wetlands, and other environmentally sensitive areas. The improved data will be incorporated into any future editions of the Lower Fraser River Stream Inventory Atlas or other map products.

### **New Products**

Information that updates the fish presence layer, as well as other data features (i.e. wetlands, terrestrial sensitive habitat) are currently being put into a database that can be used for maps at a scale up to 1:5,000. One product based on this information is the Georgia Basin Sensitive Habitat Atlas Series. In this series, several Environmentally Sensitive Area Atlases and map sheets have been produced. These Atlases are jointly produced by municipal, provincial, and federal government agencies. The Atlases layer up-to-date aerial photographs with property boundaries, land parcels, and road networks with the location of environmentally sensitive lands and watercourses. A conservative planning boundary is delineated as a flag or warning for the presence of sensitive areas, facilitating subsequent field assessments to verify and refine their location. The Atlases provide information that local governments and the public can use for consideration when creating official community plans, land use planning or other development proposals. The information contained in the Atlases is available digitally in GIS (Geographic Information System). Environmentally Sensitive Areas Atlases and map sheets have been developed for, and are being used by, the Comox Strathcona Regional District, the Regional District of Nanaimo, and the District of Saanich. Environmentally Sensitive Areas Atlases for other areas in BC, including the Lower Mainland, are under consideration.

### **MAP INTERPRETATION**

The watercourses shown in the **Lower Fraser River Stream Inventory Atlas** have been classified according to known fish use. Those watercourses or features known to support either anadromous or resident fish species are represented by a solid magenta line in the colour orthophoto series and a solid black line in the black and white map series. Watercourses for which there was no documented information on fish have been represented by a solid blue line in the colour orthophoto series and a hatched black line in the black and white series. Other information presented on the TRIM maps include transportation features, contours and text (e.g. stream or mountain names, municipalities, etc.).

Due to the nature and scale of data capture (1:20,000) for the current TRIM map base, all watercourses, wetlands or sensitive aquatic features, particularly small or ephemeral ones, are not represented or may not be precisely aligned. The category “unknown fish presence” similarly indicates the incomplete status of field information for these areas at this time and should not be interpreted as non fish bearing or not suitable habitat.

Given these limitations, the Atlas should be viewed as valuable strategic planning or reconnaissance tool; however, it must be supplemented with site-specific information for decision-making purposes.

### **GEOGRAPHIC SCOPE**

The geographic coverage of the Stream Inventory Atlas includes the areas outlined on the attached index map. The large index map, as well as the thumbnail index maps included on each map sheet, provide a quick reference to the watersheds (or portions of watersheds) which have been mapped and the corresponding TRIM map sheet numbers. Tributaries to Boundary Bay and Burrard Inlet were also included in the study area.



The colour orthophoto backdrop does not currently exist for all maps in the 1:50,000 series. The orthophotos included here are for map sheets covering the Fraser River mainstem, Burrard Inlet, and Boundary Bay tributaries. Where orthophoto coverage was not available for certain areas, the satellite image of the Greater Vancouver Regional District was incorporated (at 10 m pixel) where possible. Where the orthophoto backdrop is not available, it is suggested that the black and white maps 1:20,000 TRIM map sheets be used in conjunction with the 1:50,000 colour Atlas map sheets.

## **ACKNOWLEDGEMENTS**

This project and the first edition (September 1996) was funded by the Fraser River Action Plan, DFO, under the federal government's Green Plan. The second edition (March 1998) was funded by the Habitat Restoration and Salmon Enhancement Program, DFO. Project direction was provided by Otto Langer, Melody Farrell, and Fern Hietkamp, Habitat and Enhancement Branch, DFO.

We are grateful to the following agency staff who provided information and reviews for the Atlas:

**Department of Fisheries and Oceans:** Brian Atagi, Don Aurel, Paul Beck, Maurice Coulter-Boisvert, Scott Gilbert, Mark Johnson, Andy Lewis, Brad Mason, Gary Millar, Derek Ray, Herb Redekopp, Bruce Reid.

**BC Environment:** Rob Knight, Pamela Zevit.

Enhanced FISS data capture and hardcopy map annotation was completed by Julia Hamilton, Neil Matherson, Lori Ross and Pamela Zevit from the BC Environment Fisheries Program.

### **First Edition**

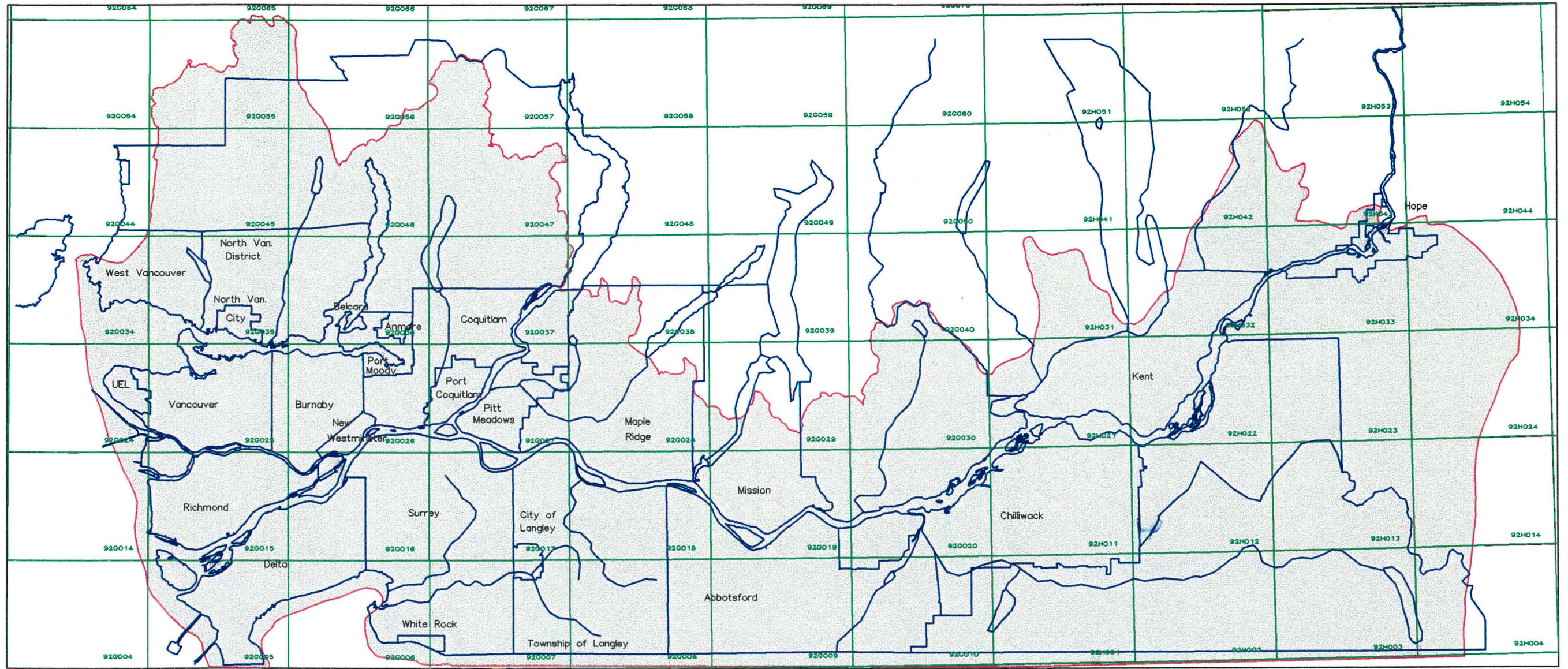
Tom Pinkerton (DFO) integrated all map themes and plotted the final Atlas product. Map digitizing, digital data capture and project coordination was provided by Michael Mascarenhas (DFO).

### **Second Edition**

Marcel Pepin, Joanna Dale, and Cynthia Durance of Precision Identification Biological Consultants researched and designed the Stream Name maps. James Hughes (DFO) designed index map inserts, and coordinated production.



# Lower Fraser River Stream Inventory Atlas

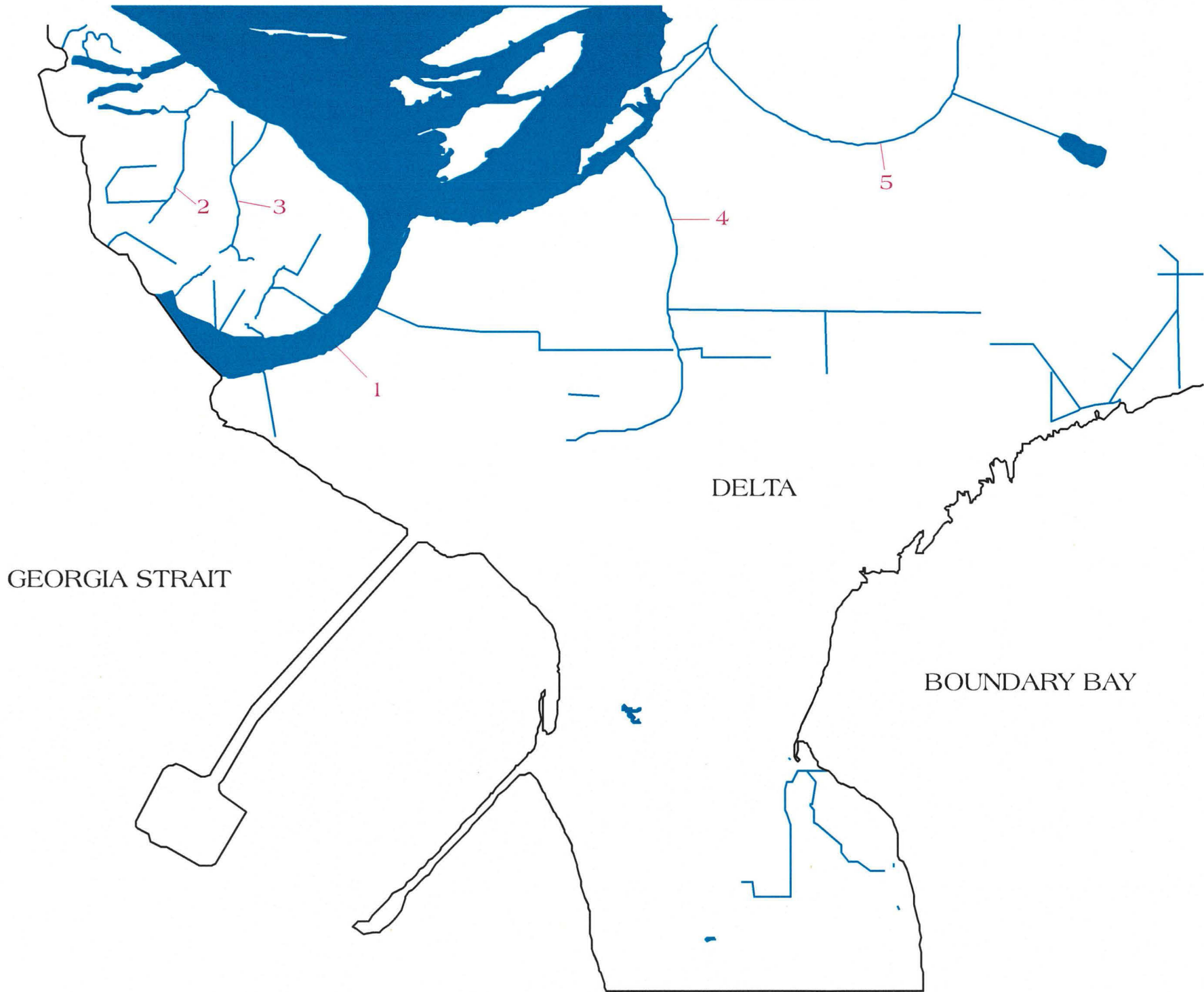


1:20,000 TRIM Map Index for Stream Inventory Atlas



# DELTA AREA

# Legend



- Coastline & International Boundary
- Streams / Rivers
- Lakes

- 1 Fraser River
- 2 London Slough
- 3 Tamboline Slough
- 4 Cohilukthan Slough
- 5 Crescent Slough

This map was produced from the digital 1:50,000 BC Watershed Atlas, used in conjunction with FIAT (Fisheries Information Access Tool). As a result, many small tributaries have not been captured and some streams may not match the existing data pictured in the Stream Inventory Atlas. This product is intended to be used as a general index for the Stream Inventory Atlas.

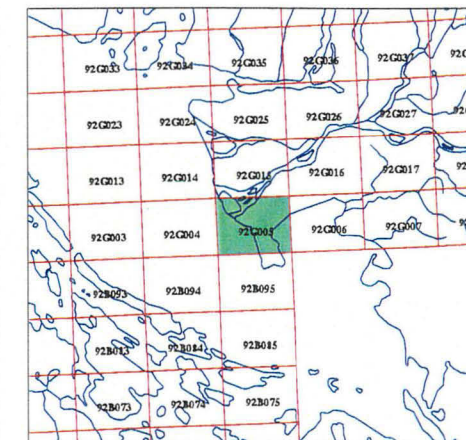
## Lower Fraser River STREAM INVENTORY ATLAS

Stream Name Index



92G005





## Legend

- ~ Known Fish Presence
- ~ Unknown Fish Presence

Note: This map has been produced from the best available information and based on the 1:20,000 TRIM base. As a result many small tributaries have not been captured. It is intended as a basis for strategic planning however, this information should be augmented with site specific information for decision making purposes. For detailed information contact Habitat and Enhancement Branch, Department of Fisheries and Oceans



Scale = 1:50,000  
500 0 500 1000 1500  
metres

Universal Transverse Mercator  
Zone 10 (CM 123 W)  
NAD83

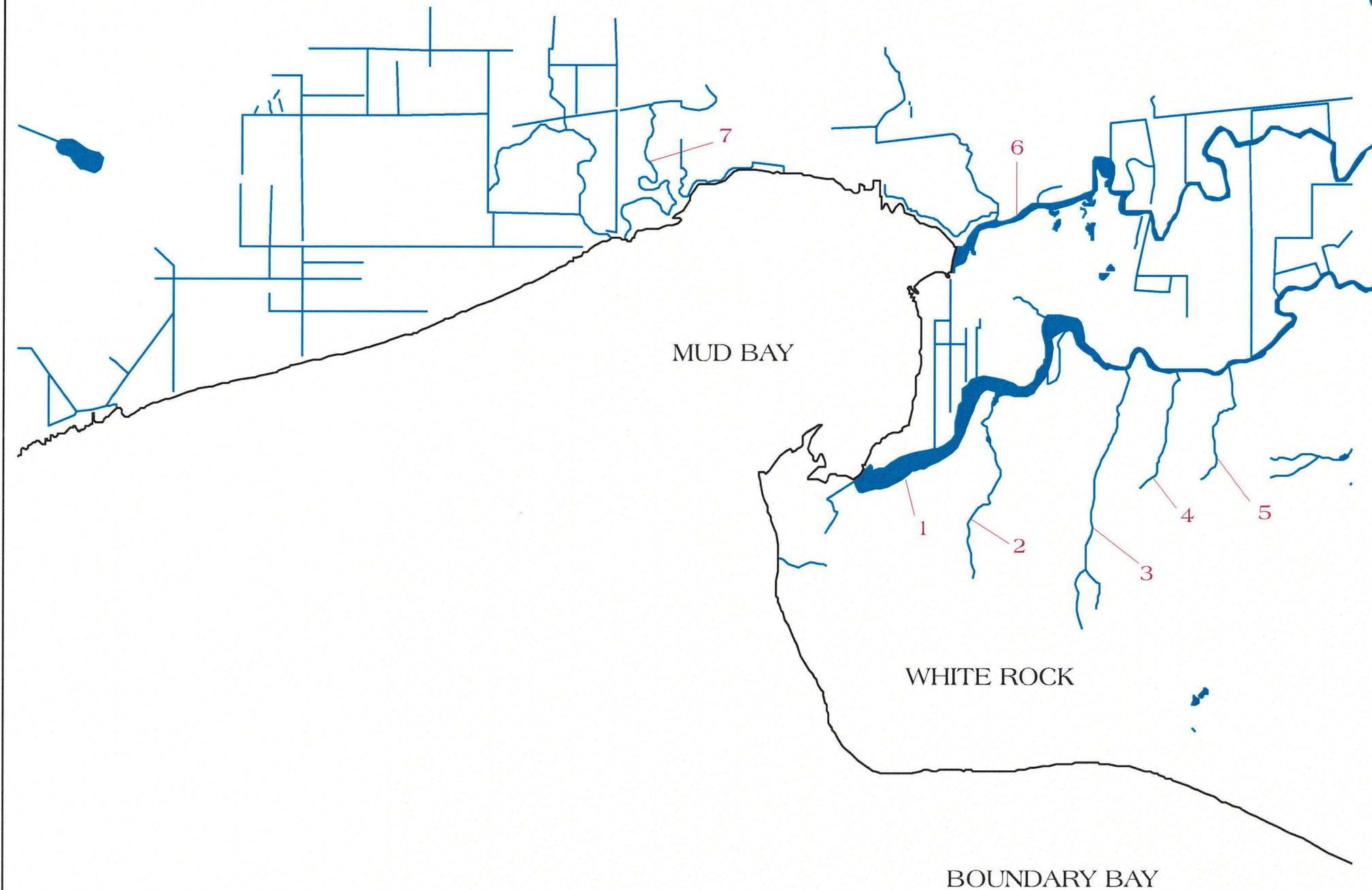
**Lower Fraser River  
STREAM INVENTORY ATLAS**  
Resource Information to Protect  
Fish Bearing Streams

**92G005**

April 20, 1998






# WHITE ROCK AREA



1000 0 2500 5000 meters

## Legend

-  Coastline & International Boundary
-  Streams / Rivers
-  Lakes

- 1 Nicomekl River
- 2 Chantrell Creek
- 3 Mackereth (Barbara) Creek
- 4 Elgin Creek
- 5 Little Anderson Creek
- 6 Serpentine River (Lower)
- 7 Eugene Brook

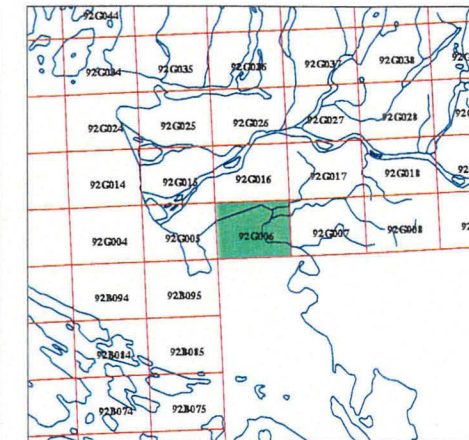
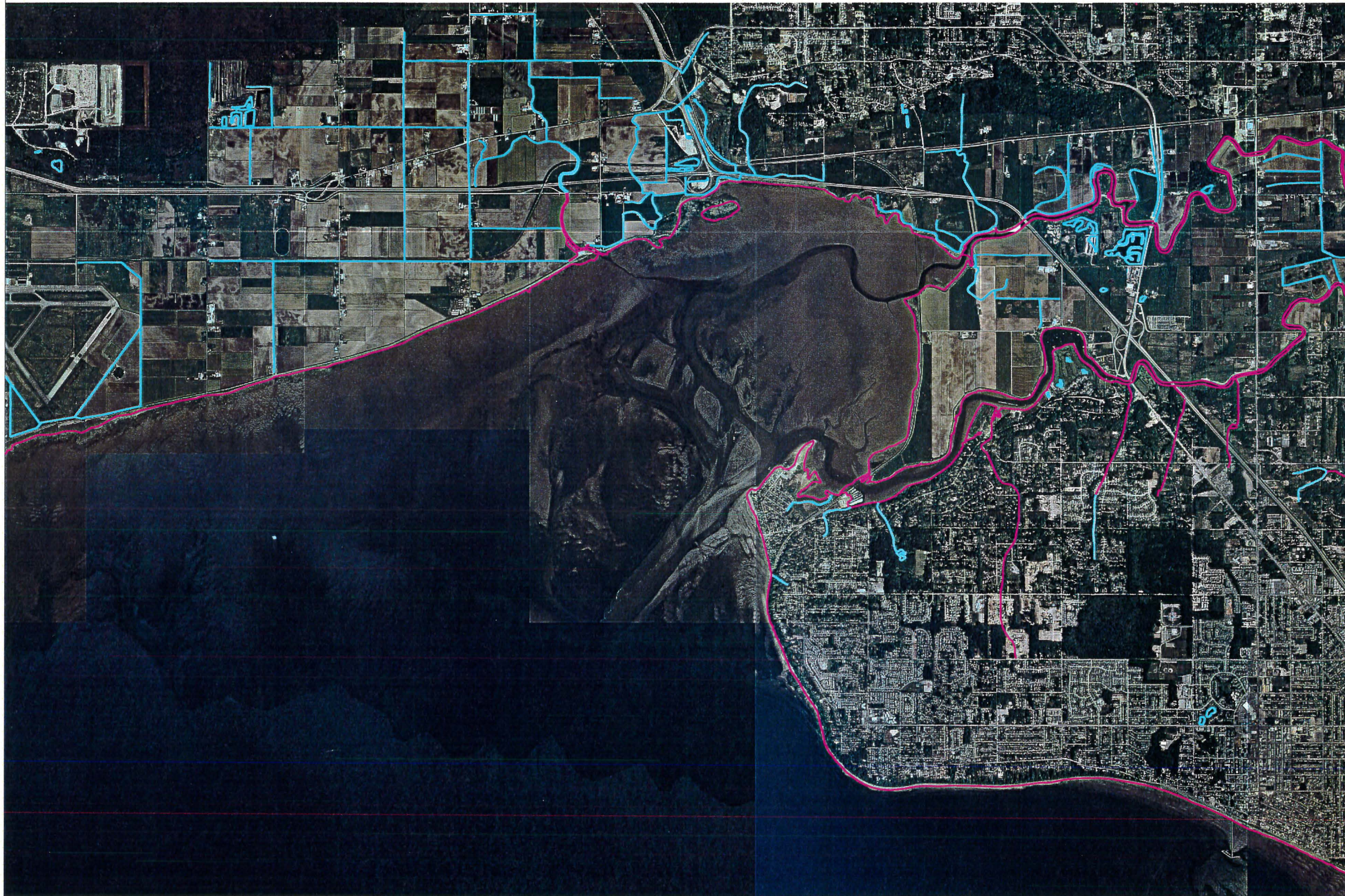
This map was produced from the digital 1:50,000 BC Watershed Atlas, used in conjunction with FIAT (Fisheries Information Access Tool). As a result, many small tributaries have not been captured and some streams may not match the existing data pictured in the Stream Inventory Atlas. This product is intended to be used as a general index for the Stream Inventory Atlas.

## Lower Fraser River STREAM INVENTORY ATLAS

Stream Name Index

92G006





## Legend

- ~ Known Fish Presence
- ~ Unknown Fish Presence

Note: This map has been produced from the best available information and based on the 1:20,000 TRIM base. As a result many small tributaries have not been captured. It is intended as a basis for strategic planning however, this information should be augmented with site specific information for decision making purposes. For detailed information contact Habitat and Enhancement Branch, Department of Fisheries and Oceans



Scale = 1:50,000  
500 0 500 1000 1500  
metres

Universal Transverse Mercator  
Zone 10 (CM 123 W)  
NAD83

**Lower Fraser River  
STREAM INVENTORY ATLAS**  
Resource Information to Protect  
Fish Bearing Streams

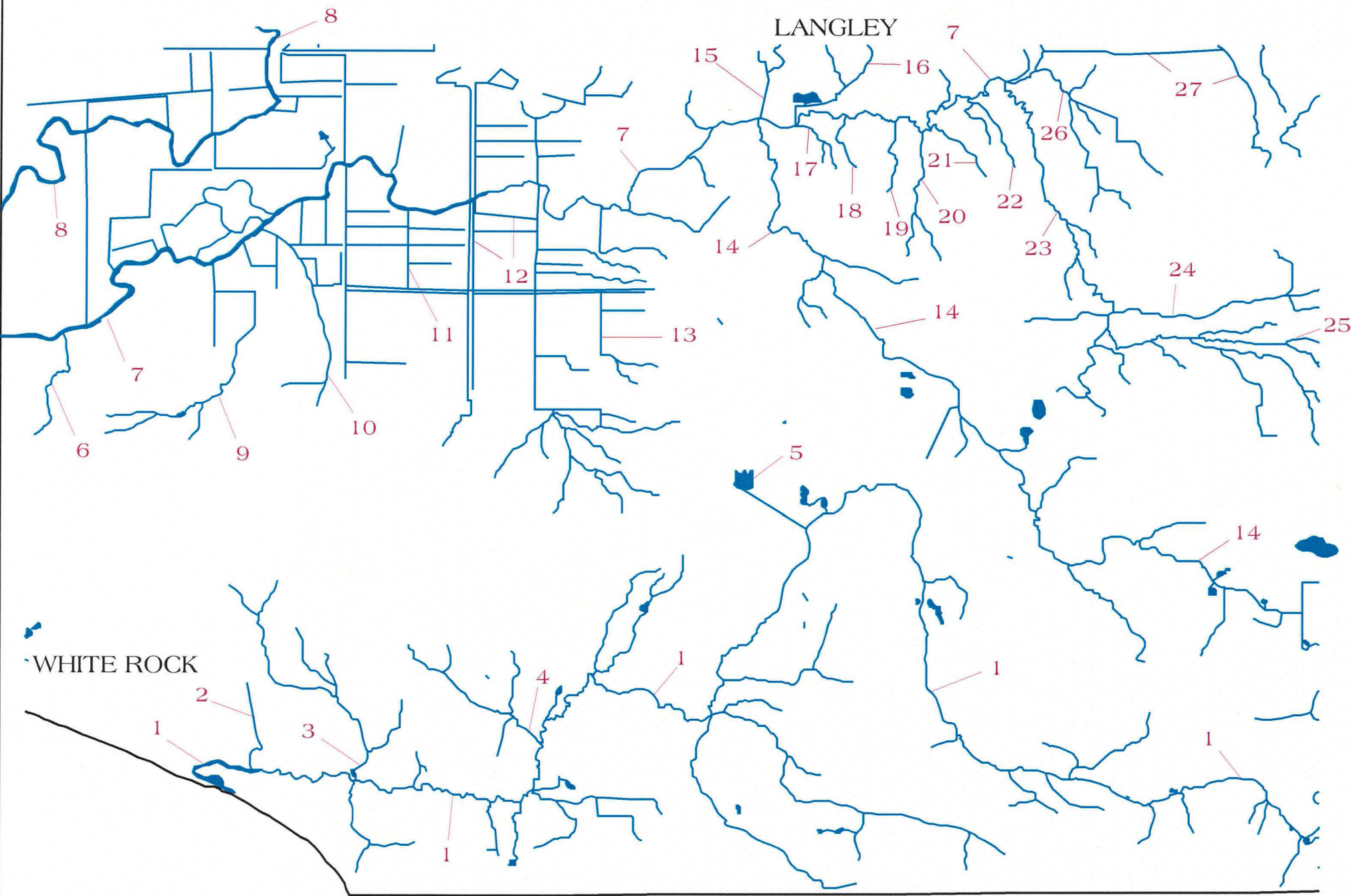
**92G006**

April 20, 1998



WHITE ROCK/LANGLEY AREA

Legend



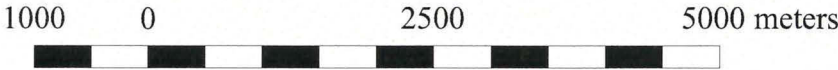
- Coastline & International Boundary
- Streams / Rivers
- Lakes

- |                            |                       |
|----------------------------|-----------------------|
| 1 Campbell River           | 21 Langley Creek      |
| 2 McNalley Creek           | 22 Newlands Brook     |
| 3 Ferguson (Fergus) Creek  | 23 Murray Creek       |
| 4 Sam Hill Creek           | 24 Best (Trigg) Creek |
| 5 Latimer Pond             | 25 McInnis Creek      |
| 6 Little Anderson Creek    | 26 Fraser Creek       |
| 7 Nicomekl River           | 27 Airport Creek      |
| 8 Serpentine River (Lower) |                       |
| 9 Morgan Creek             |                       |
| 10 Old Logging Ditch       |                       |
| 11 Burrows Ditch           |                       |
| 12 176 th Street Creek     |                       |
| 13 Erickson Creek          |                       |
| 14 Anderson Creek          |                       |
| 15 McLennan (Weirs) Creek  |                       |
| 16 Baldy Creek             |                       |
| 17 MacDonald Brook         |                       |
| 18 Willock Brook           |                       |
| 19 Muckle Creek            |                       |
| 20 Pleasantdale Creek      |                       |

This map was produced from the digital 1:50,000 BC Watershed Atlas, used in conjunction with FIAT (Fisheries Information Access Tool). As a result, many small tributaries have not been captured and some streams may not match the existing data pictured in the Stream Inventory Atlas. This product is intended to be used as a general index for the Stream Inventory Atlas.

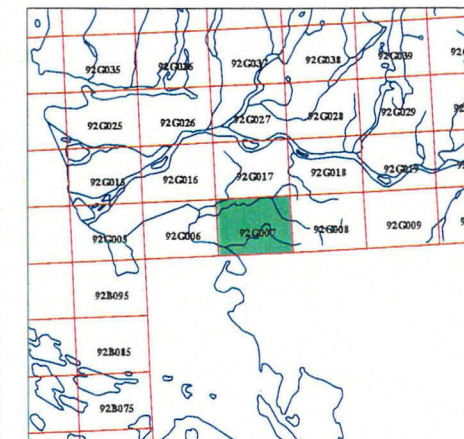
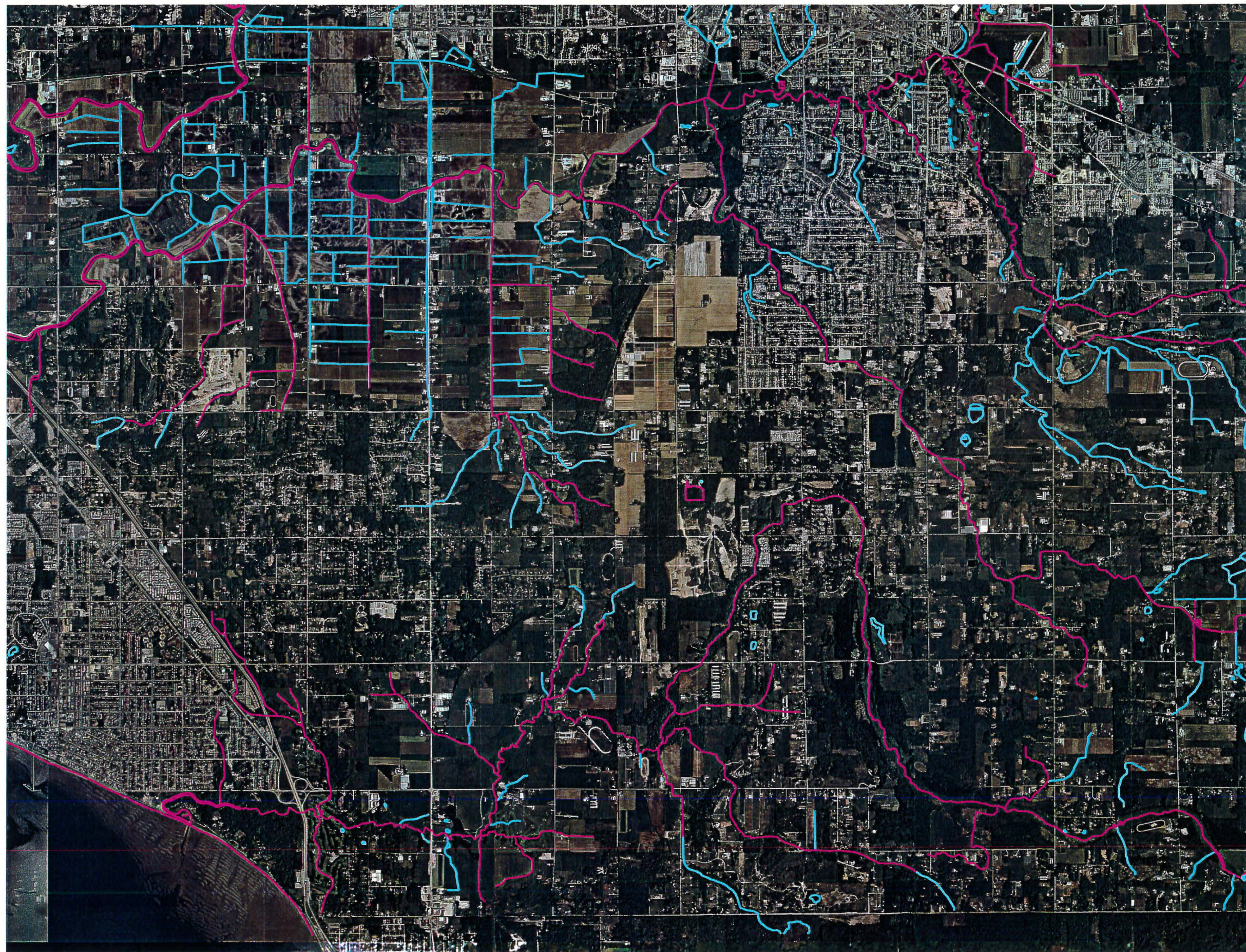
Lower Fraser River  
STREAM INVENTORY ATLAS

Stream Name Index



92G007





## Legend

- Known Fish Presence
- Unknown Fish Presence

Note: This map has been produced from the best available information and based on the 1:20,000 TRIM base. As a result many small tributaries have not been captured. It is intended as a basis for strategic planning however, this information should be augmented with site specific information for decision making purposes. For detailed information contact Habitat and Enhancement Branch, Department of Fisheries and Oceans



Scale = 1:50,000  
 500 0 500 1000 1500  
 metres

Universal Transverse Mercator  
 Zone 10 (CM 123 W)  
 NAD83

**Lower Fraser River  
 STREAM INVENTORY ATLAS**  
 Resource Information to Protect  
 Fish Bearing Streams

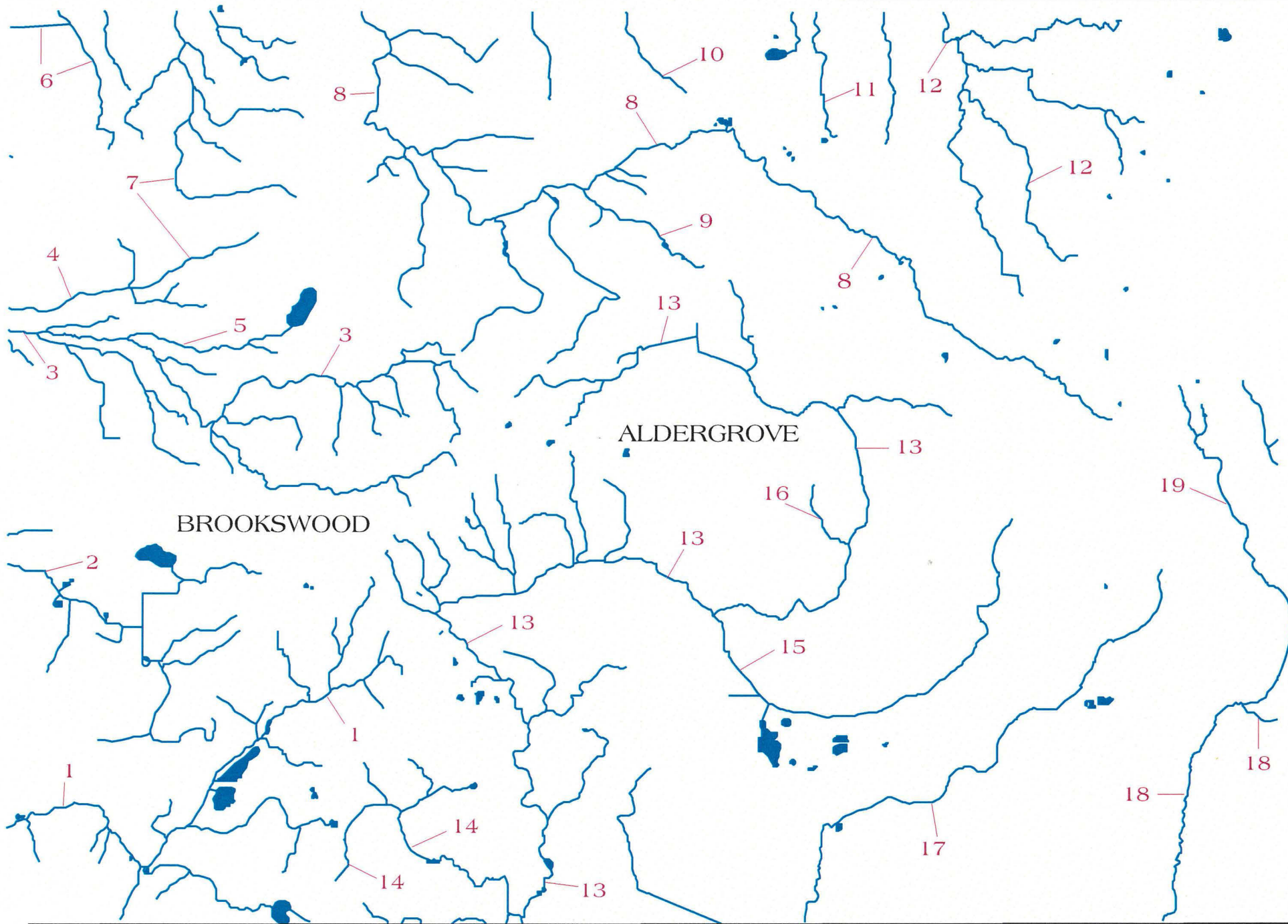
**92G007**

April 20, 1998



CAMPBELL VALLEY AREA

Legend



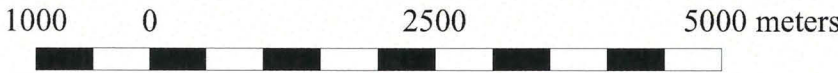
- Coastline & International Boundary
- Streams / Rivers
- Lakes

- 1 Campbell River
- 2 Anderson Creek
- 3 Murray Creek
- 4 Best (Trigg) Creek
- 5 MacInnis Creek
- 6 Airport Creek
- 7 Nicomekl River
- 8 Salmon River
- 9 Tyre Creek
- 10 Coghlan Creek
- 11 West Creek
- 12 Nathan Creek
- 13 Bertrand Creek
- 14 Cave Creek
- 15 Howes Creek
- 16 Bori Creek
- 17 Pepin Creek
- 18 Fishtrap Creek
- 19 Waechter Creek

This map was produced from the digital 1:50,000 BC Watershed Atlas, used in conjunction with FIAT (Fisheries Information Access Tool). As a result, many small tributaries have not been captured and some streams may not match the existing data pictured in the Stream Inventory Atlas. This product is intended to be used as a general index for the Stream Inventory Atlas.

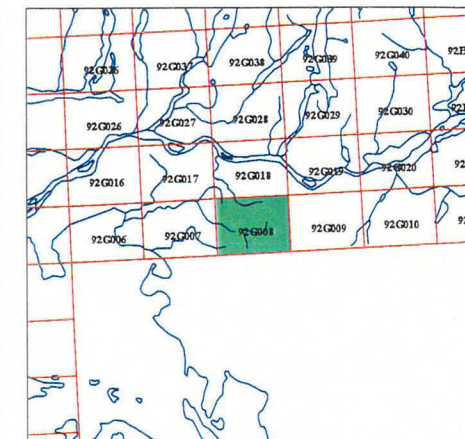
Lower Fraser River  
STREAM INVENTORY ATLAS

Stream Name Index



92G008





## Legend

- ~ Known Fish Presence
- ~ Unknown Fish Presence

Note: This map has been produced from the best available information and based on the 1:20,000 TRIM base. As a result many small tributaries have not been captured. It is intended as a basis for strategic planning however, this information should be augmented with site specific information for decision making purposes. For detailed information contact Habitat and Enhancement Branch, Department of Fisheries and Oceans



Scale = 1:50,000  
500 0 500 1000 1500  
metres

Universal Transverse Mercator  
Zone 10 (CM 123 W)  
NAD83

## Lower Fraser River STREAM INVENTORY ATLAS

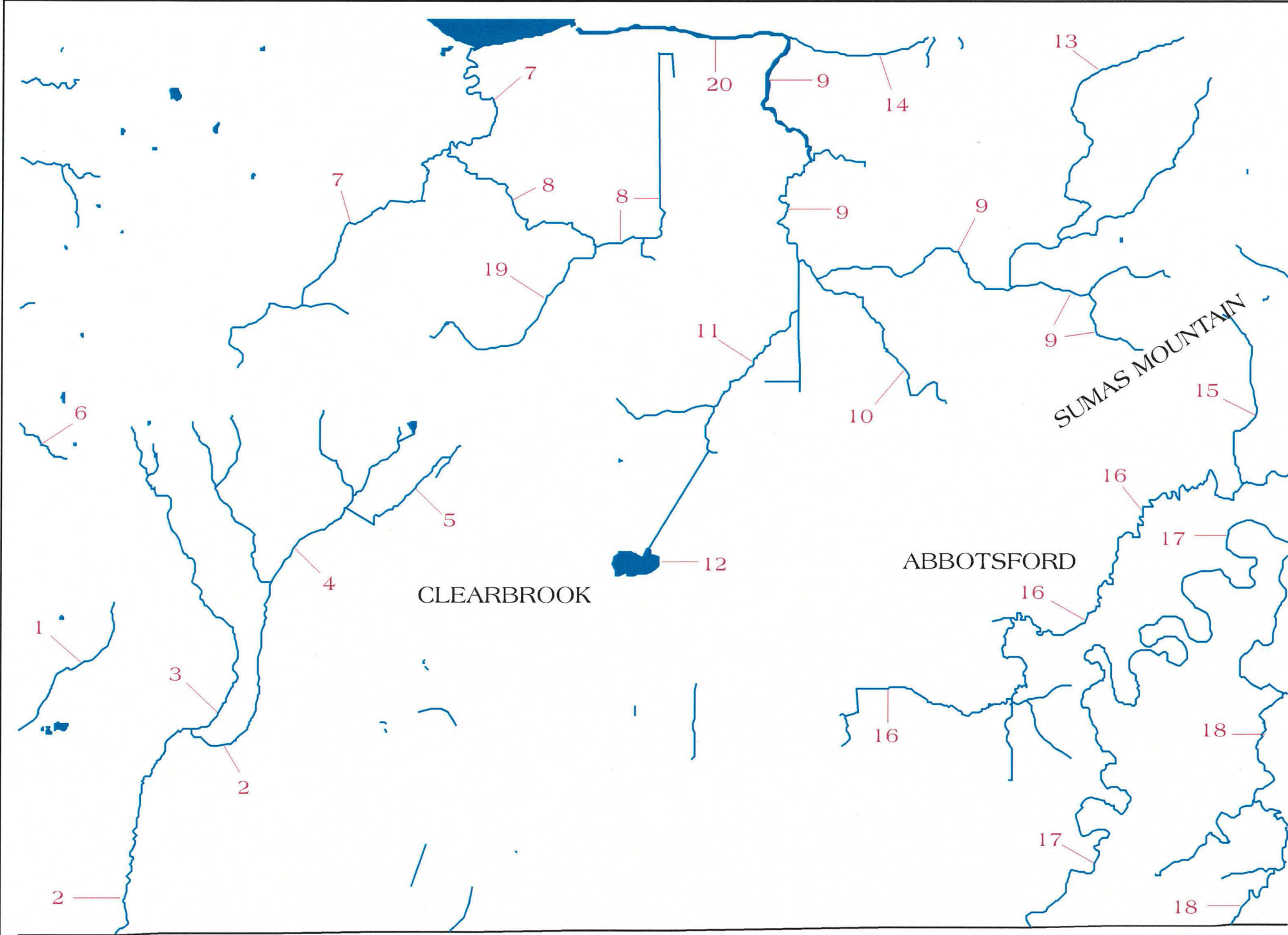
Resource Information to Protect  
Fish Bearing Streams

92G008



ABBOTSFORD AREA

Legend



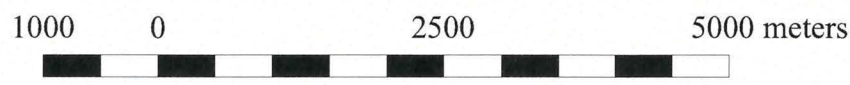
- Coastline & International Boundary
- Streams / Rivers
- Lakes

- 1 Pepin Creek
- 2 Fishtrap Creek
- 3 Waechter Creek
- 4 Enn's Brook
- 5 East Fishtrap Creek
- 6 Salmon River
- 7 McLennan Creek
- 8 Gifford Slough
- 9 Clayburn Creek
- 10 Stoney Creek
- 11 Willband Creek
- 12 Mill Lake
- 13 Poignant Creek
- 14 Page Creek
- 15 Kilgard Creek
- 16 Lonzo (Marshall) Creek
- 17 Sumas River
- 18 Saar Creek
- 19 Downes Creek
- 20 Matsqui Slough

This map was produced from the digital 1:50,000 BC Watershed Atlas, used in conjunction with FIAT (Fisheries Information Access Tool). As a result, many small tributaries have not been captured and some streams may not match the existing data pictured in the Stream Inventory Atlas. This product is intended to be used as a general index for the Stream Inventory Atlas.

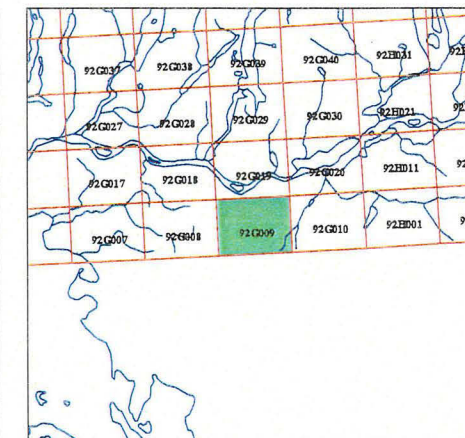
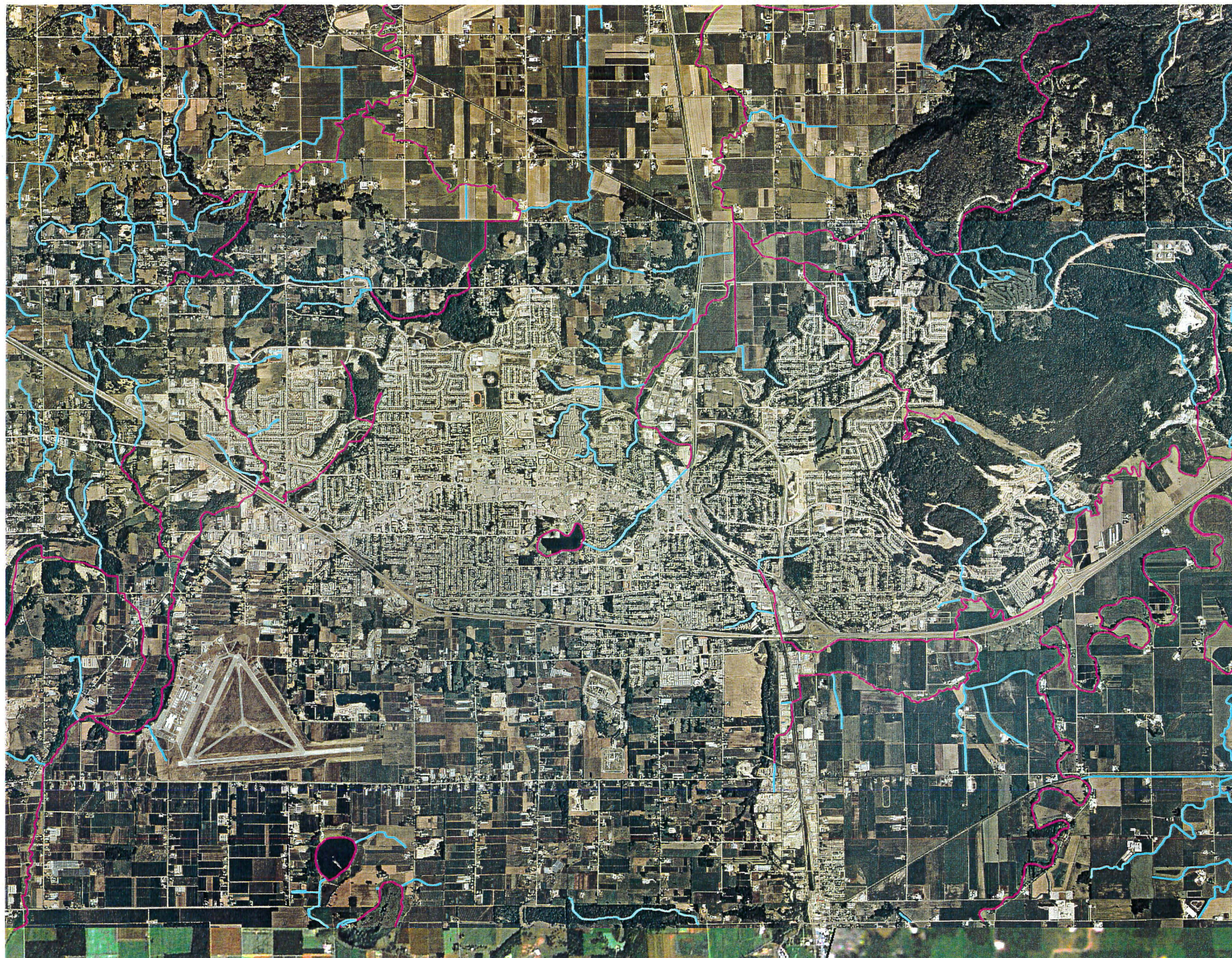
Lower Fraser River  
STREAM INVENTORY ATLAS

Stream Name Index



92G009





## Legend

- ~ Known Fish Presence
- ~ Unknown Fish Presence

Note: This map has been produced from the best available information and based on the 1:20,000 TRIM base. As a result many small tributaries have not been captured. It is intended as a basis for strategic planning however, this information should be augmented with site specific information for decision making purposes. For detailed information contact Habitat and Enhancement Branch, Department of Fisheries and Oceans



Scale = 1:50,000  
500 0 500 1000 1500  
metres

Universal Transverse Mercator  
Zone 10 (CM 123 W)  
NAD83

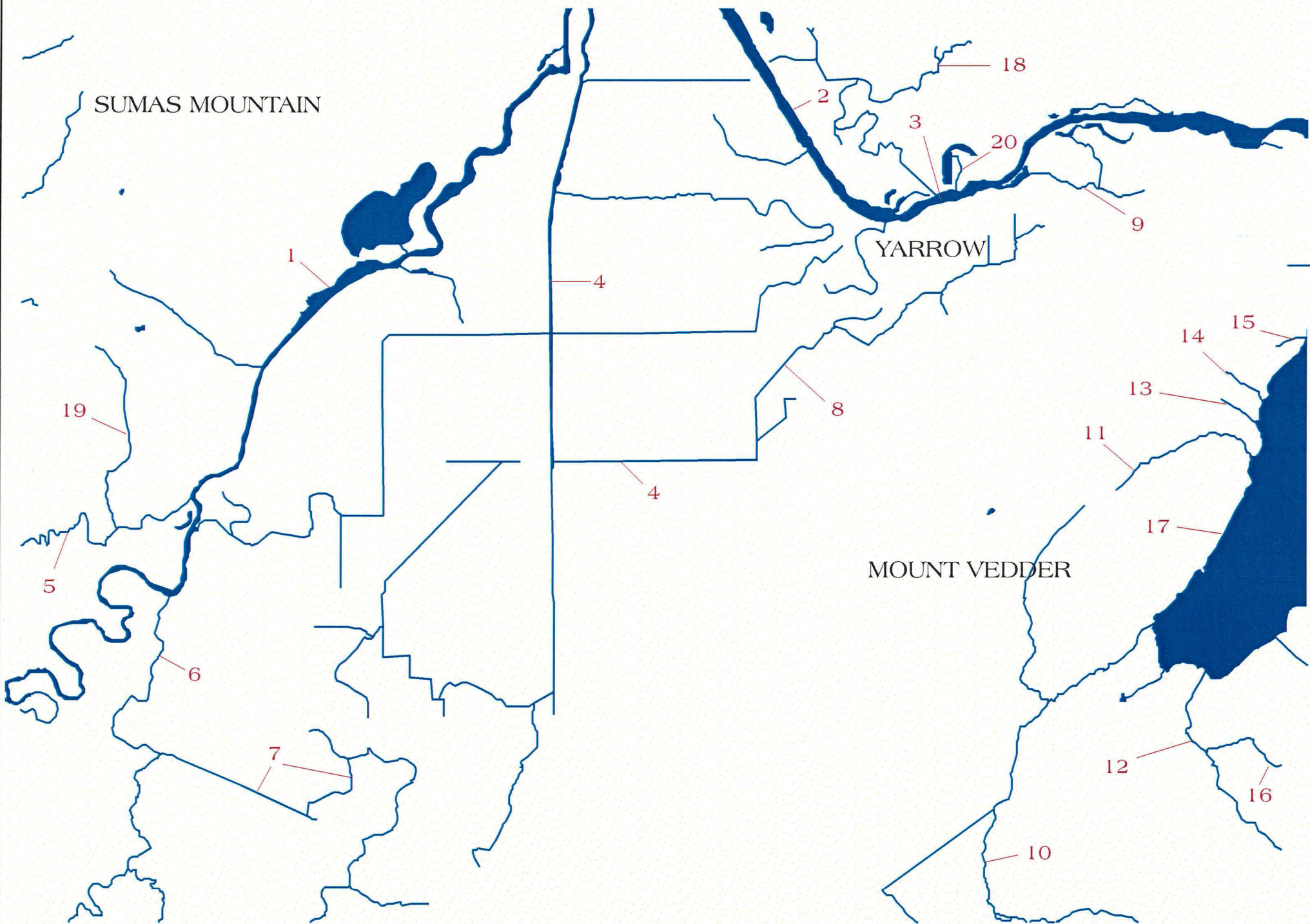
**Lower Fraser River  
STREAM INVENTORY ATLAS**  
Resource Information to Protect  
Fish Bearing Streams

**92G009**



SUMAS PRAIRIE AREA

Legend



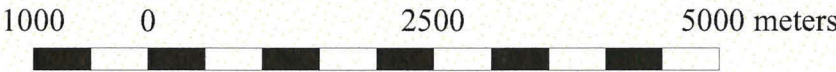
- Streams / Rivers
- Lakes

- 1 Sumas River
- 2 Vedder Canal
- 3 Lower Chilliwack River
- 4 Sumas Lake Canal
- 5 Lonzo (Marshall) Creek
- 6 Saar Creek
- 7 Arnold Slough
- 8 Stewart Slough
- 9 Street Creek
- 10 Frosst Creek
- 11 Ascaphus Creek
- 12 Watt Creek
- 13 Laurel Creek
- 14 Fin Creek
- 15 Wells Creek
- 16 Amadis Creek
- 17 Cultus Lake
- 18 Lewis Slough
- 19 Kilgard Creek
- 20 Salwein Creek

This map was produced from the digital 1:50,000 BC Watershed Atlas, used in conjunction with FIAT (Fisheries Information Access Tool). As a result, many small tributaries have not been captured and some streams may not match the existing data pictured in the Stream Inventory Atlas. This product is intended to be used as a general index for the Stream Inventory Atlas.

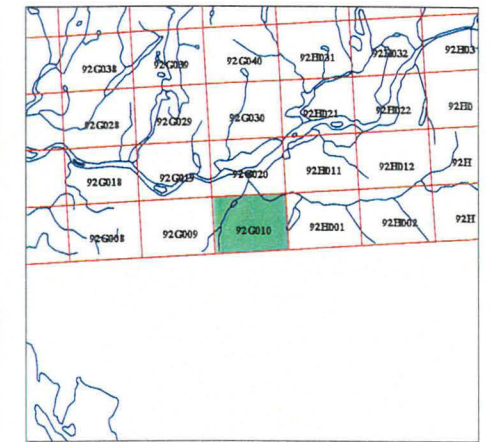
Lower Fraser River  
STREAM INVENTORY ATLAS

Stream Name Index





92G010





## Legend

-  Known Fish Presence
-  Unknown Fish Presence

Note: This map has been produced from the best available information and based on the 1:20,000 TRIM base. As a result many small tributaries have not been captured. It is intended as a basis for strategic planning however, this information should be augmented with site specific information for decision making purposes. For detailed information contact Habitat and Enhancement Branch, Department of Fisheries and Oceans



Scale = 1:50,000  
500 0 500 1000 1500  
metres

Universal Transverse Mercator  
Zone 10 (CM 123 W)  
NAD83

## Lower Fraser River STREAM INVENTORY ATLAS

Resource Information to Protect  
Fish Bearing Streams

92G010

April 20, 1998



LULU ISLAND AREA

Legend

- Coastline & International Boundary
- Streams / Rivers
- Lakes

- 1 Fraser River
- 2 Woodward Slough
- 3 Crescent Slough
- 4 Tilbury Slough
- 5 Byrne Creek
- 6 Sussex Creek
- 7 No.7 Road Slough

This map was produced from the digital 1:50,000 BC Watershed Atlas, used in conjunction with FIAT (Fisheries Information Access Tool). As a result, many small tributaries have not been captured and some streams may not match the existing data pictured in the Stream Inventory Atlas. This product is intended to be used as a general index for the Stream Inventory Atlas.

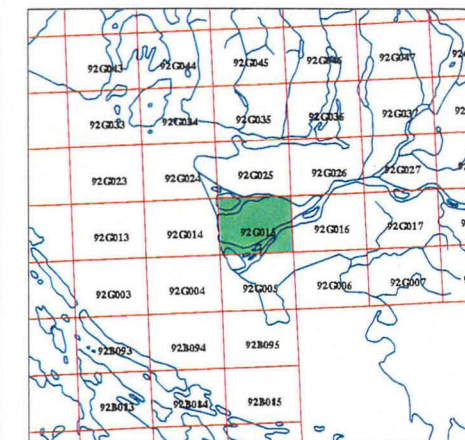
Lower Fraser River  
STREAM INVENTORY ATLAS

Stream Name Index



92G015





## Legend

- Known Fish Presence
- Unknown Fish Presence

Note: This map has been produced from the best available information and based on the 1:20,000 TRIM base. As a result many small tributaries have not been captured. It is intended as a basis for strategic planning however, this information should be augmented with site specific information for decision making purposes. For detailed information contact Habitat and Enhancement Branch, Department of Fisheries and Oceans



Scale = 1:50,000  
500 0 500 1000 1500  
metres

Universal Transverse Mercator  
Zone 10 (CM 123 W)  
NAD83

**Lower Fraser River  
STREAM INVENTORY ATLAS**  
Resource Information to Protect  
Fish Bearing Streams

**92G015**

April 20, 1998



SURREY AREA

Legend



- Streams / Rivers
- Lakes
- 1 Fraser River
  - 2 Byrne Creek
  - 3 Cougar Canyon Creek
  - 4 Serpentine River (Lower)
  - 5 Hyland Creek
  - 6 Mahood (Bear) Creek
  - 7 Quibble Creek
  - 8 Lay Creek
  - 9 Upper Serpentine River (Tynehead Creek)
  - 10 Bonaccord (Port Mann) Creek
  - 11 McAdam (Howell) Creek
  - 12 Collings (White) Creek (?)
  - 13 Manson Canal (Hanson Ditch)
  - 14 Scott Creek
  - 15 Robson Creek
  - 16 Knudson Creek (?)
  - 17 Tilbury Slough
  - 18 Eugene Brook

Note:  
? = mouth of unmapped stream

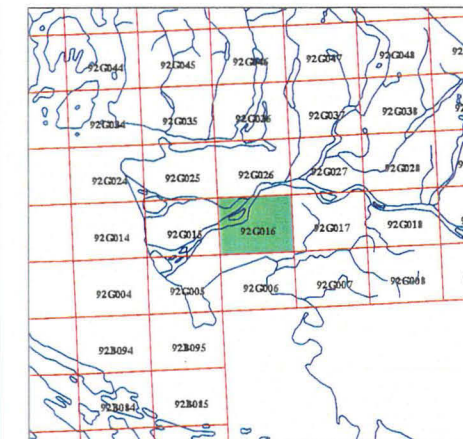
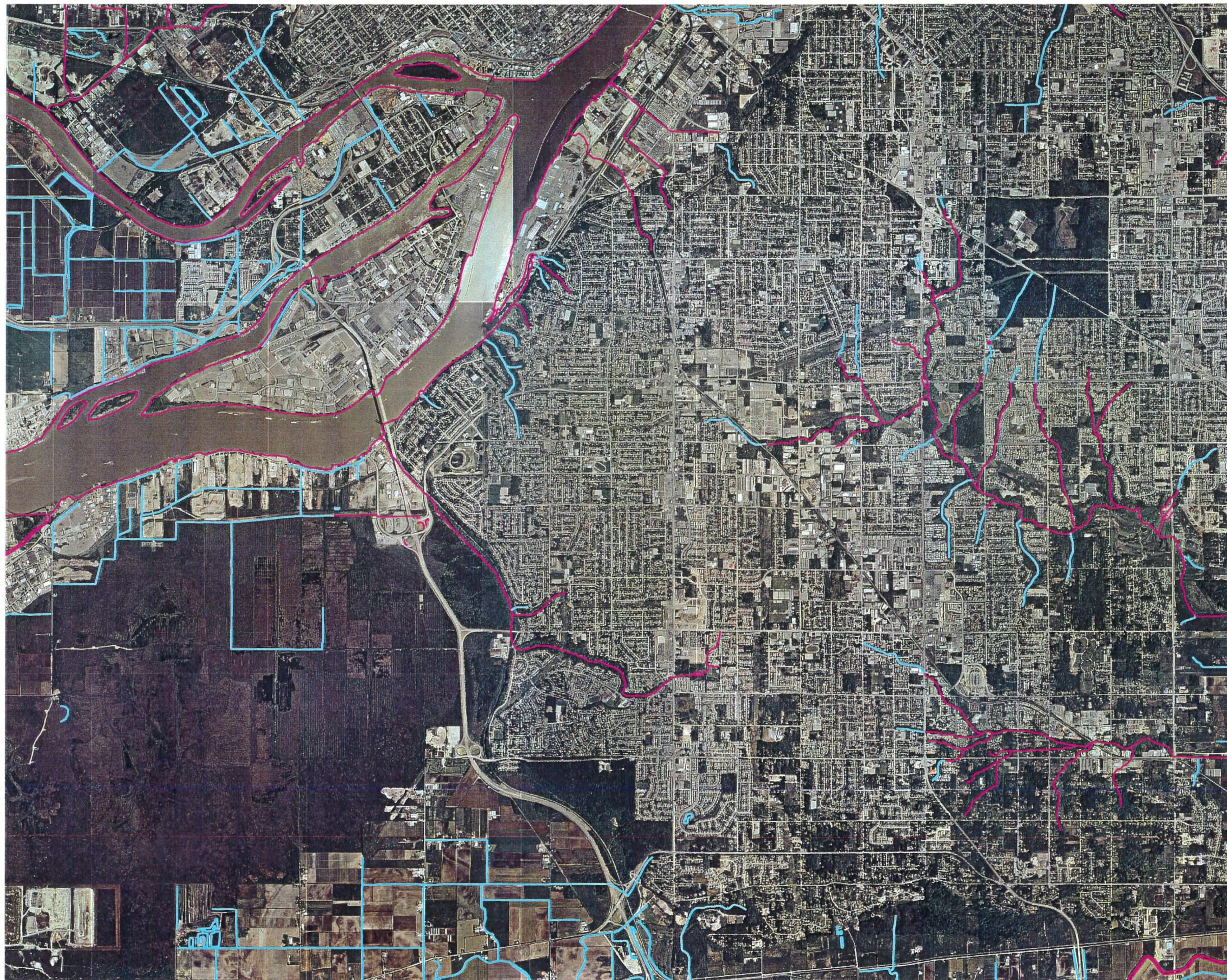
This map was produced from the digital 1:50,000 BC Watershed Atlas, used in conjunction with FIAT (Fisheries Information Access Tool). As a result, many small tributaries have not been captured and some streams may not match the existing data pictured in the Stream Inventory Atlas. This product is intended to be used as a general index for the Stream Inventory Atlas.

Lower Fraser River  
STREAM INVENTORY ATLAS  
Stream Name Index



92G016





## Legend

- ~ Known Fish Presence
- ~ Unknown Fish Presence

Note: This map has been produced from the best available information and based on the 1:20,000 TRIM base. As a result many small tributaries have not been captured. It is intended as a basis for strategic planning however, this information should be augmented with site specific information for decision making purposes. For detailed information contact Habitat and Enhancement Branch, Department of Fisheries and Oceans



Scale = 1:50,000  
500 0 500 1000 1500  
metres

Universal Transverse Mercator  
Zone 10 (CM 123 W)  
NAD83

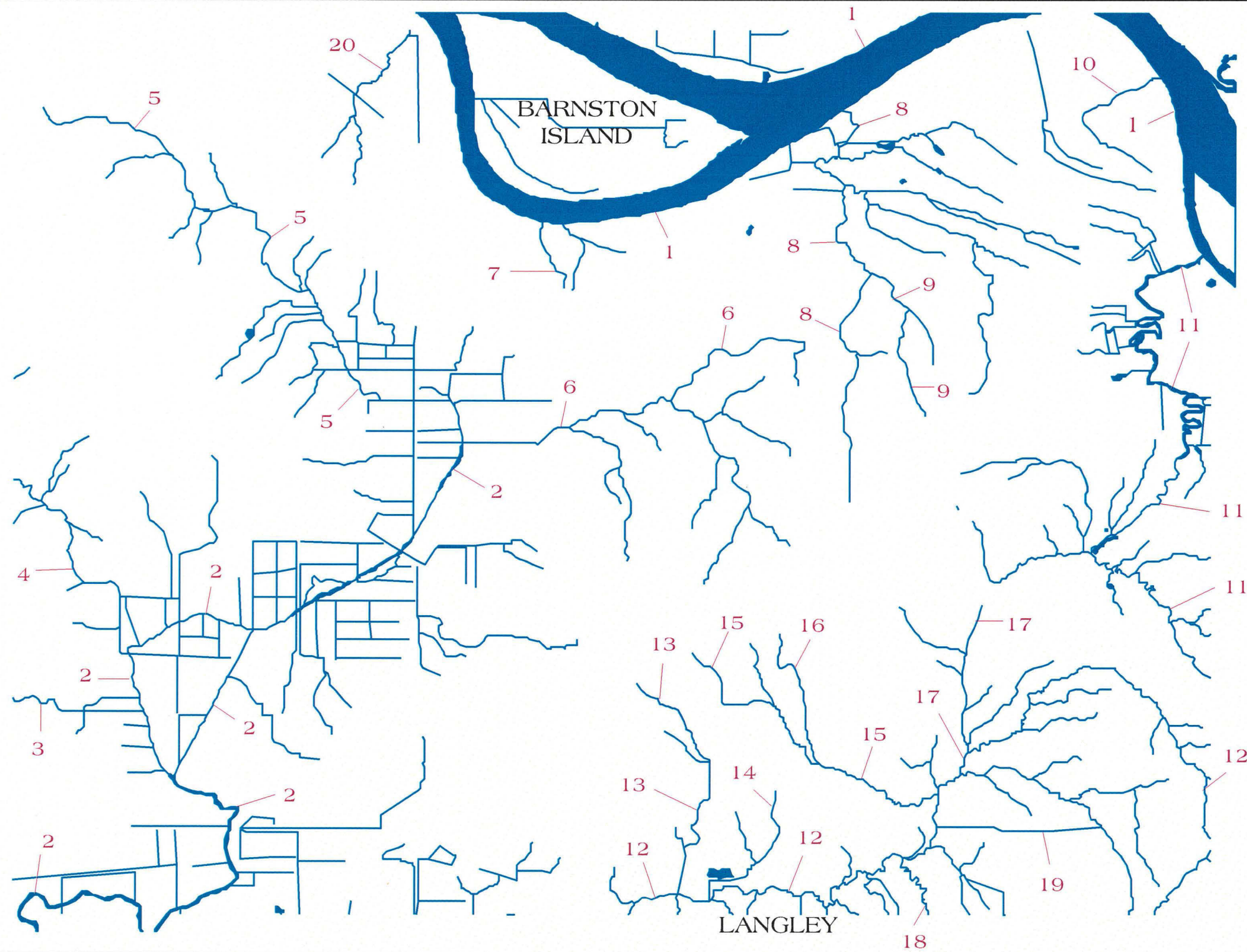
## Lower Fraser River STREAM INVENTORY ATLAS

Resource Information to Protect  
Fish Bearing Streams

92G016




# LANGLEY AREA



1000 0 2500 5000 meters

## Legend

-  Streams / Rivers
-  Lakes

- 1 Fraser River
- 2 Serpentine River
- 3 Hyland Creek
- 4 Mahood (Bear) Creek
- 5 Upper Serpentine River (Tynehead Creek)
- 6 Latimer Creek
- 7 Lee Horne Brook
- 8 Yorkson Creek
- 9 Munday Creek
- 10 Derby Reach Creek
- 11 Salmon River
- 12 Nicomekl River
- 13 McLennan (Weirs) Creek
- 14 Baldy Creek
- 15 Logan Creek
- 16 Jeffrey Creek
- 17 North Creek
- 18 Murray Creek
- 19 Airport Creek
- 20 Centre Creek

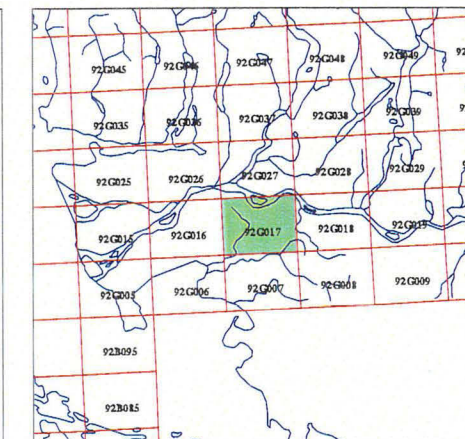
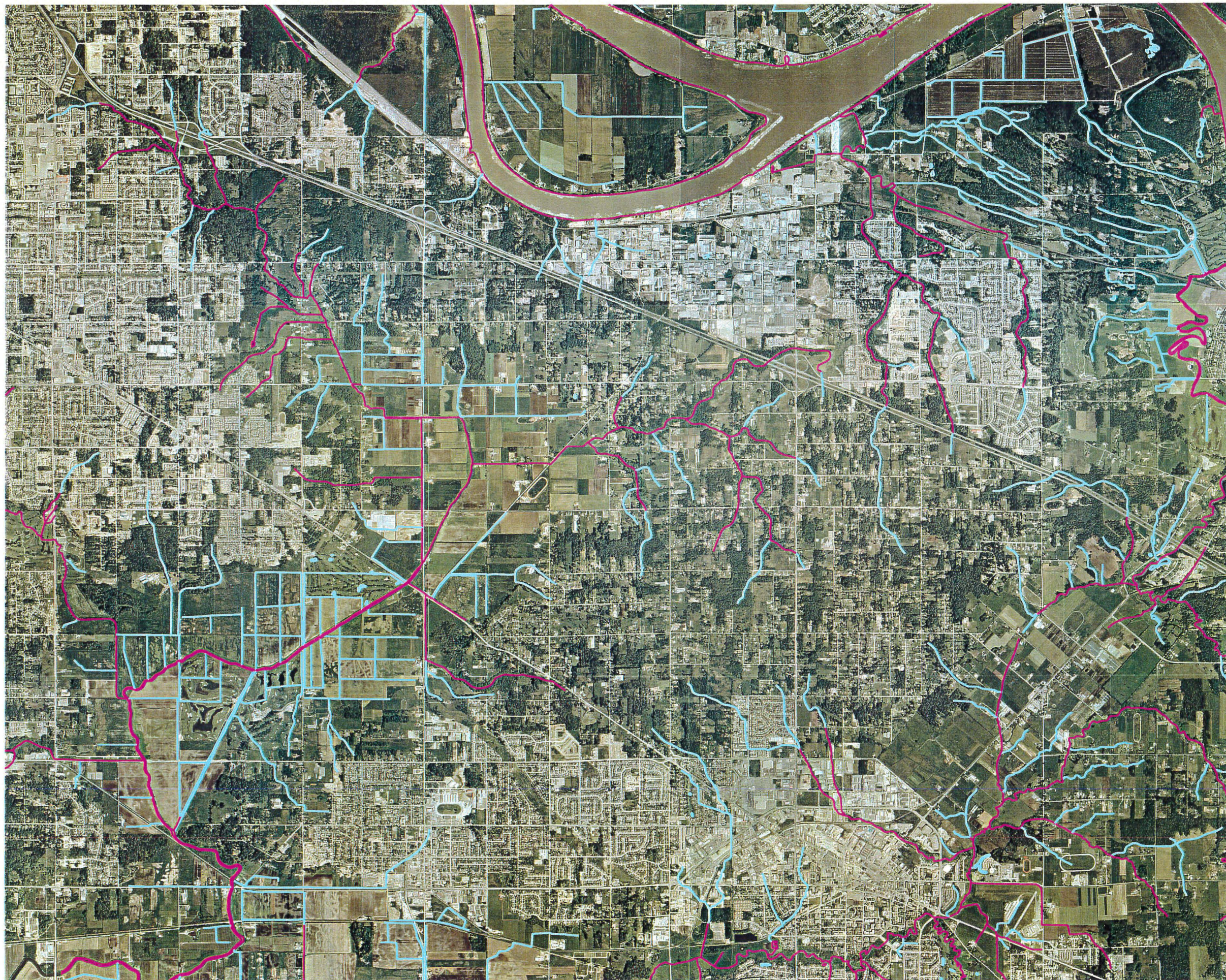
This map was produced from the digital 1:50,000 BC Watershed Atlas, used in conjunction with FIAT (Fisheries Information Access Tool). As a result, many small tributaries have not been captured and some streams may not match the existing data pictured in the Stream Inventory Atlas. This product is intended to be used as a general index for the Stream Inventory Atlas.

## Lower Fraser River STREAM INVENTORY ATLAS

Stream Name Index

92G017





## Legend

- ~ Known Fish Presence
- ~ Unknown Fish Presence

Note: This map has been produced from the best available information and based on the 1:20,000 TRIM base. As a result many small tributaries have not been captured. It is intended as a basis for strategic planning however, this information should be augmented with site specific information for decision making purposes. For detailed information contact Habitat and Enhancement Branch, Department of Fisheries and Oceans



Scale = 1:50,000  
 500 0 500 1000 1500  
 metres

Universal Transverse Mercator  
 Zone 10 (CM 123 W)  
 NAD83

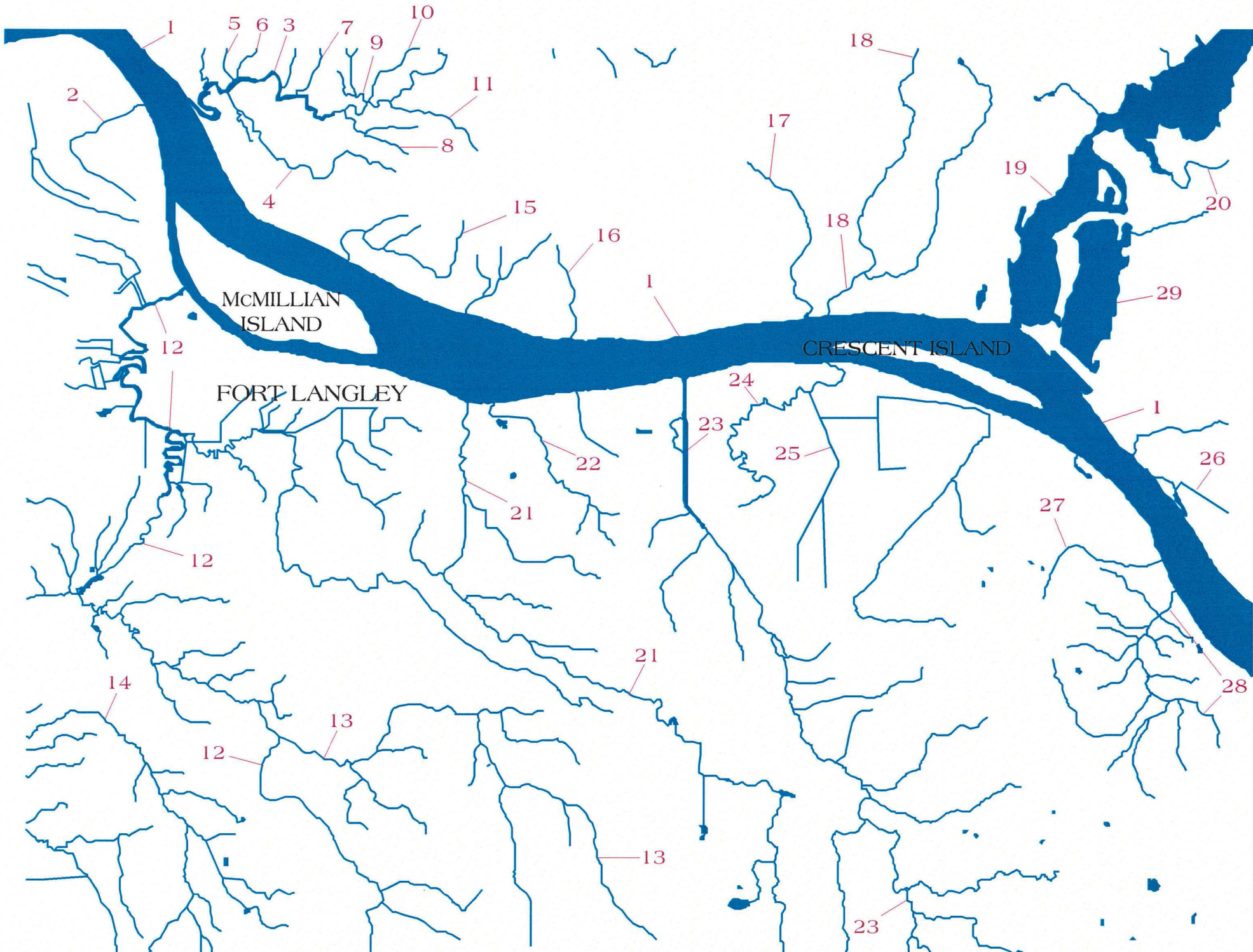
**Lower Fraser River  
 STREAM INVENTORY ATLAS**  
 Resource Information to Protect  
 Fish Bearing Streams

**92G017**



# FORT LANGLEY AREA

# Legend



- Streams / Rivers
- Lakes

- |                                 |                                     |
|---------------------------------|-------------------------------------|
| 1 Fraser River                  | 21 West Creek                       |
| 2 Derby Reach Creek             | 22 Palmateer (Williams, East) Creek |
| 3 Kanaka Creek                  | 23 Nathan Creek                     |
| 4 Spencer Creek                 | 24 Nathan Slough                    |
| 5 Salamander Creek              | 25 Benson Canal                     |
| 6 Cottonwood Creek              | 26 Chester Creek                    |
| 7 Rainbow Creek                 | 27 Camson Creek                     |
| 8 Magee Creek                   | 28 Hanna Creek                      |
| 9 Seigie Creek                  | 29 Silvermere Lake                  |
| 10 Donovan Creek (Dunlop Brook) |                                     |
| 11 Thornvale Creek              |                                     |
| 12 Salmon River                 |                                     |
| 13 Coghlan Creek                |                                     |
| 14 Nicomekl River               |                                     |
| 15 Albion Creek                 |                                     |
| 16 Sprott Creek                 |                                     |
| 17 York Creek                   |                                     |
| 18 Whonnock Creek               |                                     |
| 19 Stave River                  |                                     |
| 20 Hairsine Creek               |                                     |

This map was produced from the digital 1:50,000 BC Watershed Atlas, used in conjunction with FIAT (Fisheries Information Access Tool). As a result, many small tributaries have not been captured and some streams may not match the existing data pictured in the Stream Inventory Atlas. This product is intended to be used as a general index for the Stream Inventory Atlas.

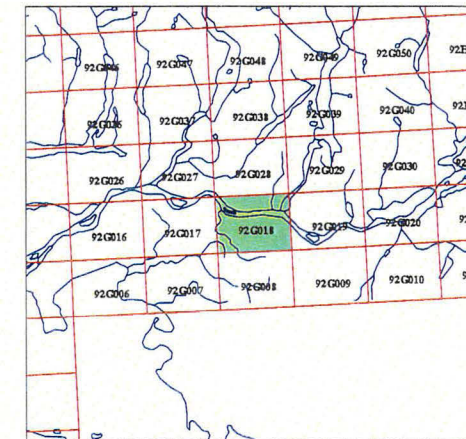
## Lower Fraser River STREAM INVENTORY ATLAS

Stream Name Index



1000 0 2500 5000 meters

92G018





## Legend

-  Known Fish Presence
-  Unknown Fish Presence

Note: This map has been produced from the best available information and based on the 1:20,000 TRIM base. As a result many small tributaries have not been captured. It is intended as a basis for strategic planning however, this information should be augmented with site specific information for decision making purposes. For detailed information contact Habitat and Enhancement Branch, Department of Fisheries and Oceans



Scale = 1:50,000  
500 0 500 1000 1500  
metres

Universal Transverse Mercator  
Zone 10 (CM 123 W)  
NAD83

## Lower Fraser River STREAM INVENTORY ATLAS

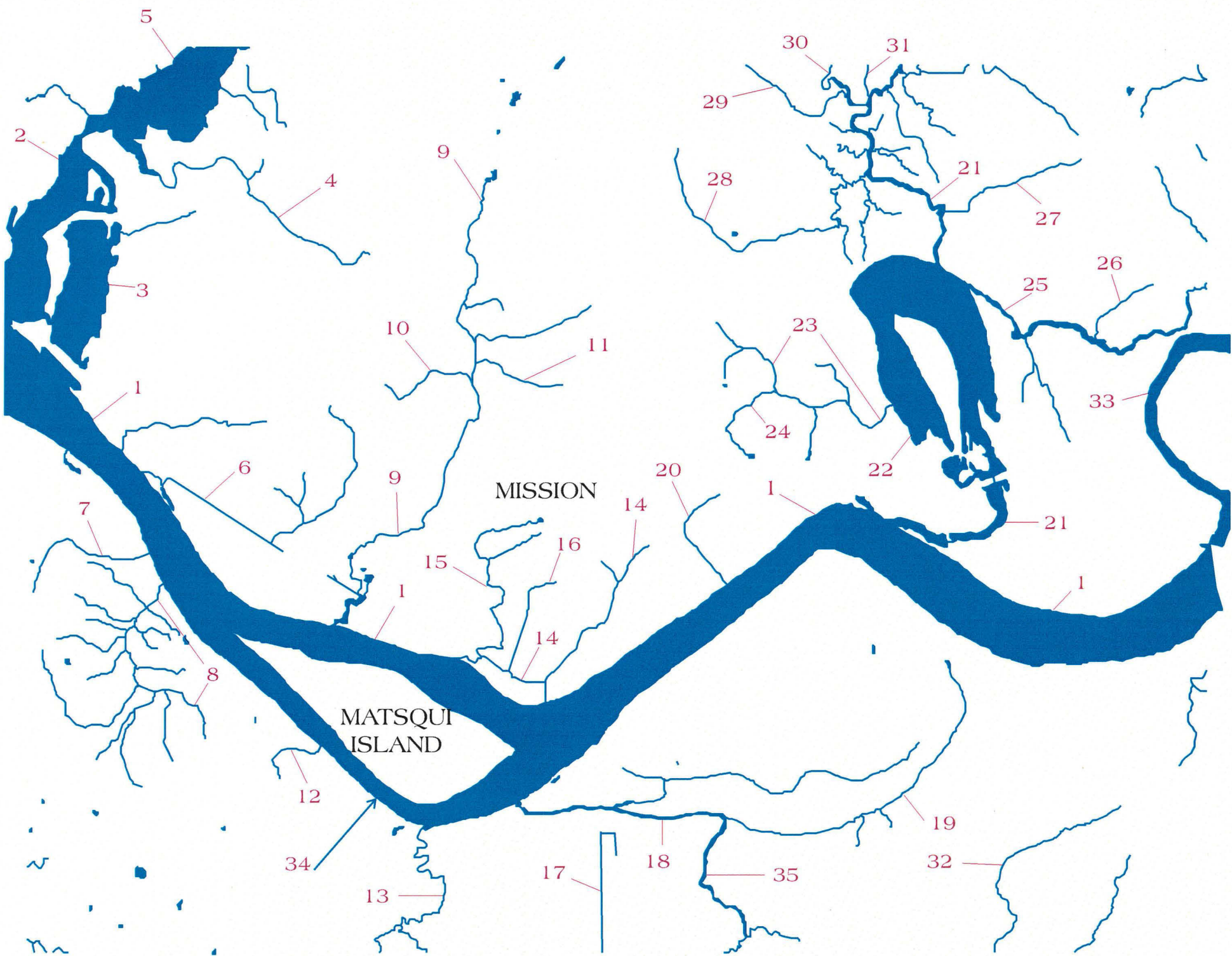
Resource Information to Protect  
Fish Bearing Streams

92G018



MISSION AREA

Legend



- Streams / Rivers
- Lakes

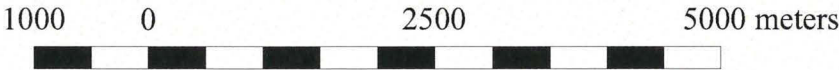
- |                                |                           |
|--------------------------------|---------------------------|
| 1 Fraser River                 | 22 Hatzic Lake            |
| 2 Stave River                  | 23 Draper Creek           |
| 3 Silvermere Lake              | 24 Wharton Creek          |
| 4 Hairsine Creek               | 25 Chilqua Creek (Slough) |
| 5 Hayward Lake                 | 26 Madill Creek           |
| 6 Chester Creek                | 27 Scorey Creek           |
| 7 Camson Creek                 | 28 Currie Creek           |
| 8 Hanna Creek                  | 29 Kenworthy Creek        |
| 9 Silverdale Creek             | 30 Bouchier Creek         |
| 10 Proud Creek                 | 31 Lagace Creek           |
| 11 Gaudin Creek                | 32 Poignant Creek         |
| 12 Tones Creek                 | 33 Nicomen Slough         |
| 13 McLennan Creek              | 34 Coligny Creek (?)      |
| 14 Mandale Slough (Lane Creek) | 35 Clayburn Creek         |
| 15 Windebank Creek             |                           |
| 16 Horne Creek                 |                           |
| 17 Gifford Slough              |                           |
| 18 Matsqui Slough              |                           |
| 19 Page Creek                  |                           |
| 20 D'Herbomez Creek            |                           |
| 21 Hatzic Slough               |                           |

Note:  
? = mouth of unmapped stream

This map was produced from the digital 1:50,000 BC Watershed Atlas, used in conjunction with FIAT (Fisheries Information Access Tool). As a result, many small tributaries have not been captured and some streams may not match the existing data pictured in the Stream Inventory Atlas. This product is intended to be used as a general index for the Stream Inventory Atlas.

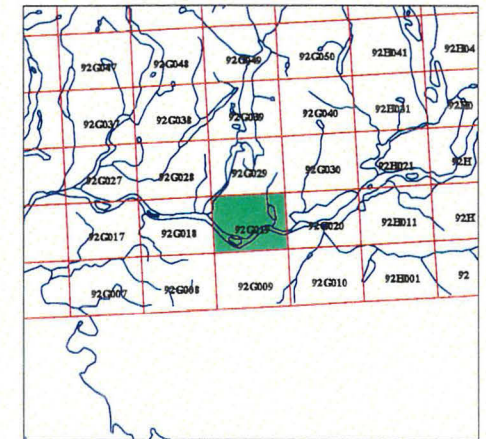
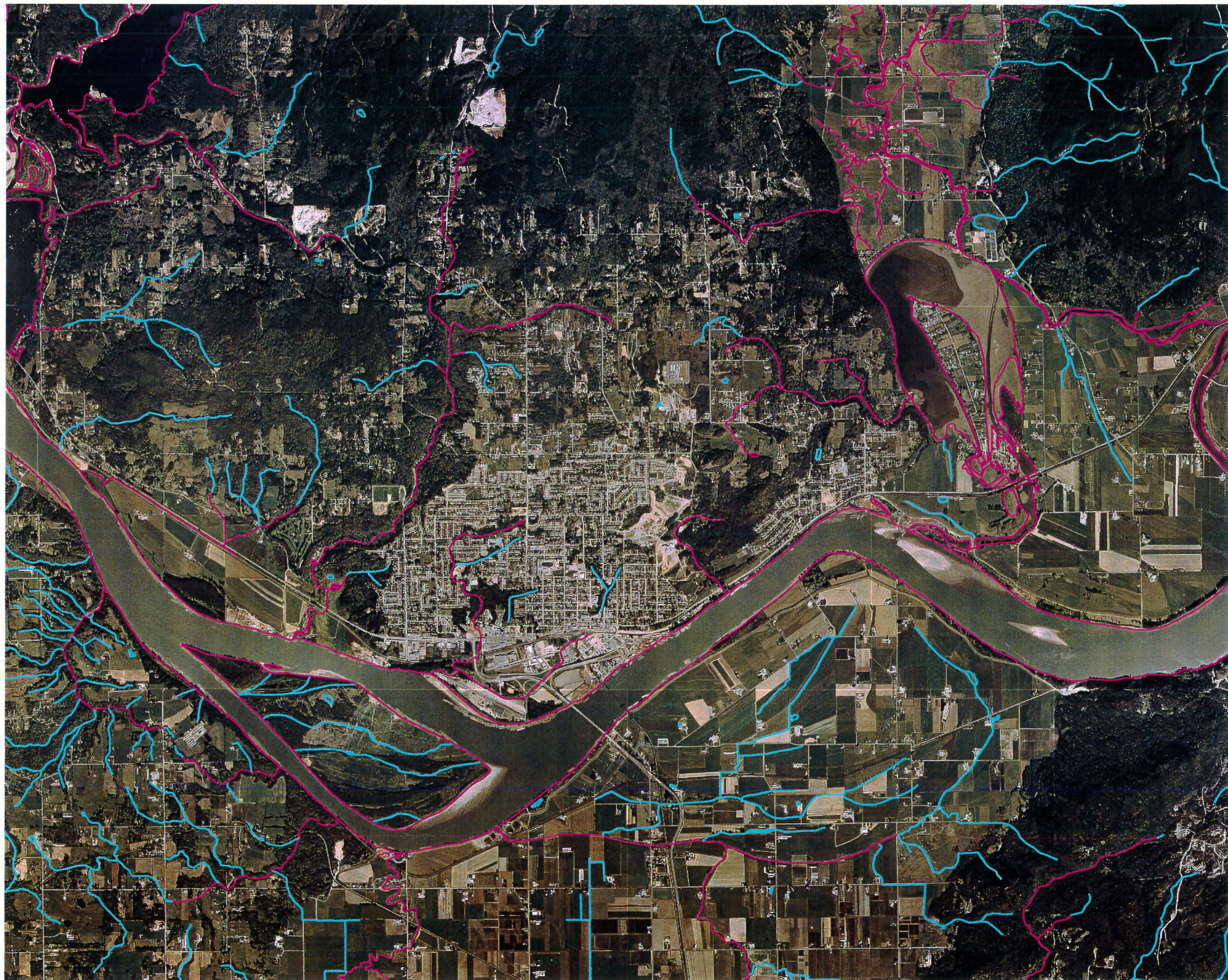
Lower Fraser River  
STREAM INVENTORY ATLAS

Stream Name Index



92G019





## Legend

- ~ Known Fish Presence
- ~ Unknown Fish Presence

Note: This map has been produced from the best available information and based on the 1:20,000 TRIM base. As a result many small tributaries have not been captured. It is intended as a basis for strategic planning however, this information should be augmented with site specific information for decision making purposes. For detailed information contact Habitat and Enhancement Branch, Department of Fisheries and Oceans



Scale = 1:50,000  
500 0 500 1000 1500  
metres

Universal Transverse Mercator  
Zone 10 (CM 123 W)  
NAD83

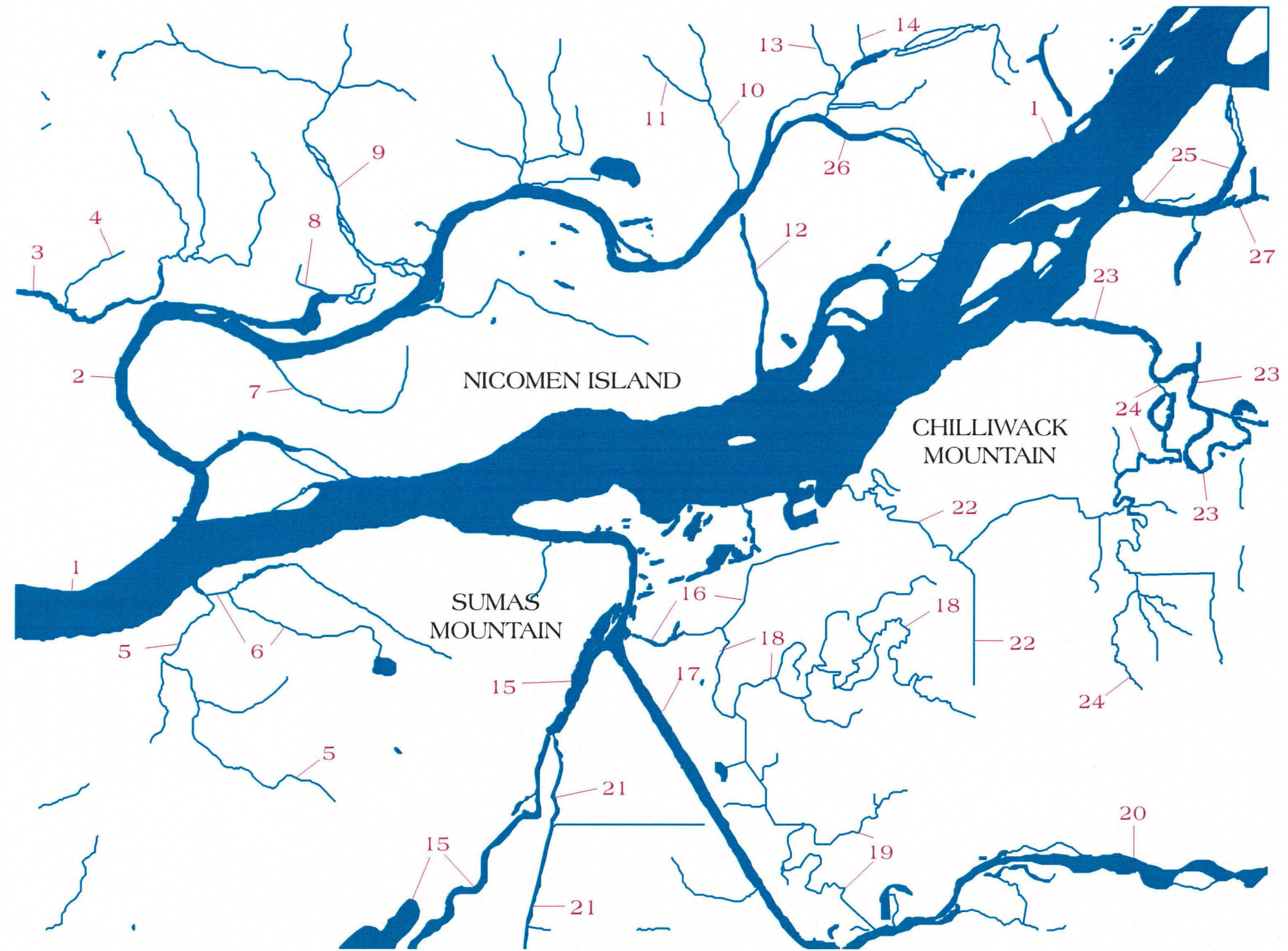
## Lower Fraser River STREAM INVENTORY ATLAS

Resource Information to Protect  
Fish Bearing Streams

92G019



# NICOMEN ISLAND AREA



## Legend

-  Streams / Rivers
-  Lakes

- |                           |                          |
|---------------------------|--------------------------|
| 1 Fraser River            | 21 Sumas Lake Canal      |
| 2 Nicomen Slough          | 22 Wilson Slough         |
| 3 Chilqua Creek (Slough)  | 23 Chilliwack Creek      |
| 4 Madill Creek            | 24 Atchelitz Creek       |
| 5 Wades Creek             | 25 Shefford Slough       |
| 6 Chadsey Creek           | 26 Zaitscullachan Slough |
| 7 Mud Slough              | 27 Hope Slough           |
| 8 Inches Creek            |                          |
| 9 Norrish (Suicide) Creek |                          |
| 10 Deroche (Crazy) Creek  |                          |
| 11 Morton Creek           |                          |
| 12 Quaamitch Slough       |                          |
| 13 Pye Creek              |                          |
| 14 Barnes Creek           |                          |
| 15 Sumas River            |                          |
| 16 Miller Slough          |                          |
| 17 Vedder Canal           |                          |
| 18 McGillivary Slough     |                          |
| 19 Lewis Slough           |                          |
| 20 Lower Chilliwack River |                          |

This map was produced from the digital 1:50,000 BC Watershed Atlas, used in conjunction with FIAT (Fisheries Information Access Tool). As a result, many small tributaries have not been captured and some streams may not match the existing data pictured in the Stream Inventory Atlas. This product is intended to be used as a general index for the Stream Inventory Atlas.

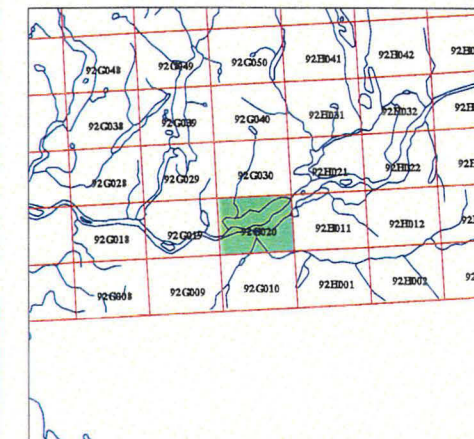
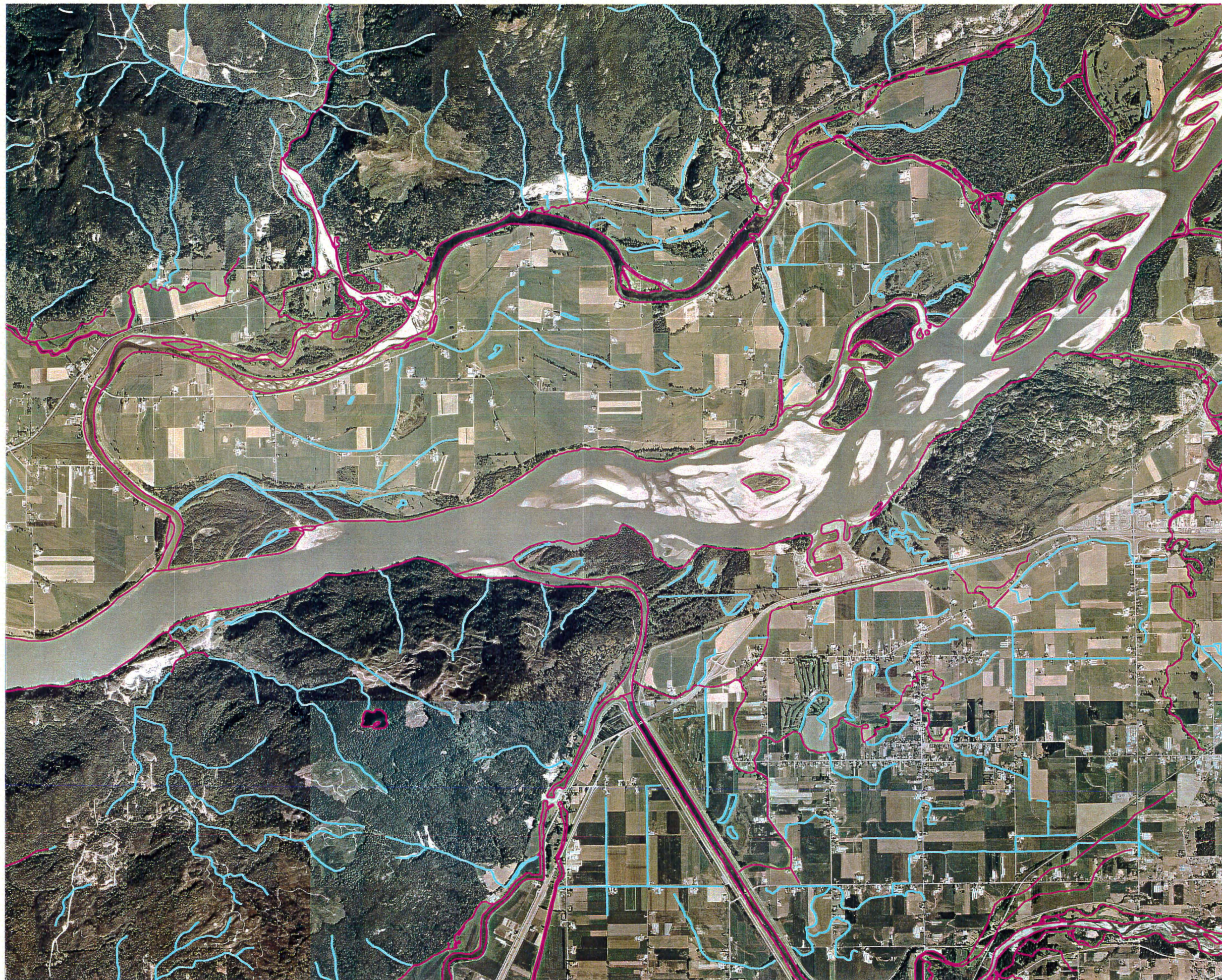
## Lower Fraser River STREAM INVENTORY ATLAS

Stream Name Index





92G020

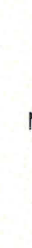




## Legend

-  Known Fish Presence
-  Unknown Fish Presence

Note: This map has been produced from the best available information and based on the 1:20,000 TRIM base. As a result many small tributaries have not been captured. It is intended as a basis for strategic planning however, this information should be augmented with site specific information for decision making purposes. For detailed information contact Habitat and Enhancement Branch, Department of Fisheries and Oceans



Scale = 1:50,000  
500 0 500 1000 1500  
metres

Universal Transverse Mercator  
Zone 10 (CM 123 W)  
NAD83

## Lower Fraser River STREAM INVENTORY ATLAS




Resource Information to Protect  
Fish Bearing Streams

92G020



UNIVERSITY ENDOWMENT LANDS AREA

Legend

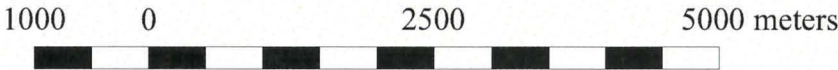
-  Coastline & International Boundary
-  Streams / Rivers
-  Lakes

- 1 Fraser River
- 2 Musqueam (Tin Can) Creek
- 3 Cutthroat Creek (?)

*Note:*  
? = mouth of unmapped stream

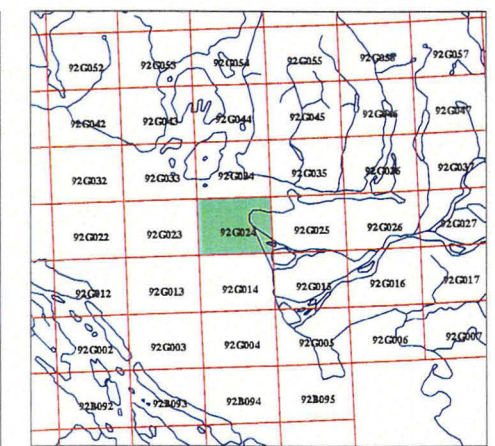
This map was produced from the digital 1:50,000 BC Watershed Atlas, used in conjunction with FIAT (Fisheries Information Access Tool). As a result, many small tributaries have not been captured and some streams may not match the existing data pictured in the Stream Inventory Atlas. This product is intended to be used as a general index for the Stream Inventory Atlas.

**Lower Fraser River  
STREAM INVENTORY ATLAS**  
Stream Name Index





92G024





## Legend

-  Known Fish Presence
-  Unknown Fish Presence

Note: This map has been produced from the best available information and based on the 1:20,000 TRIM base. As a result many small tributaries have not been captured. It is intended as a basis for strategic planning however, this information should be augmented with site specific information for decision making purposes. For detailed information contact Habitat and Enhancement Branch, Department of Fisheries and Oceans



Scale = 1:50,000  
500 0 500 1000 1500  
metres

Universal Transverse Mercator  
Zone 10 (CM 123 W)  
NAD83

## Lower Fraser River STREAM INVENTORY ATLAS

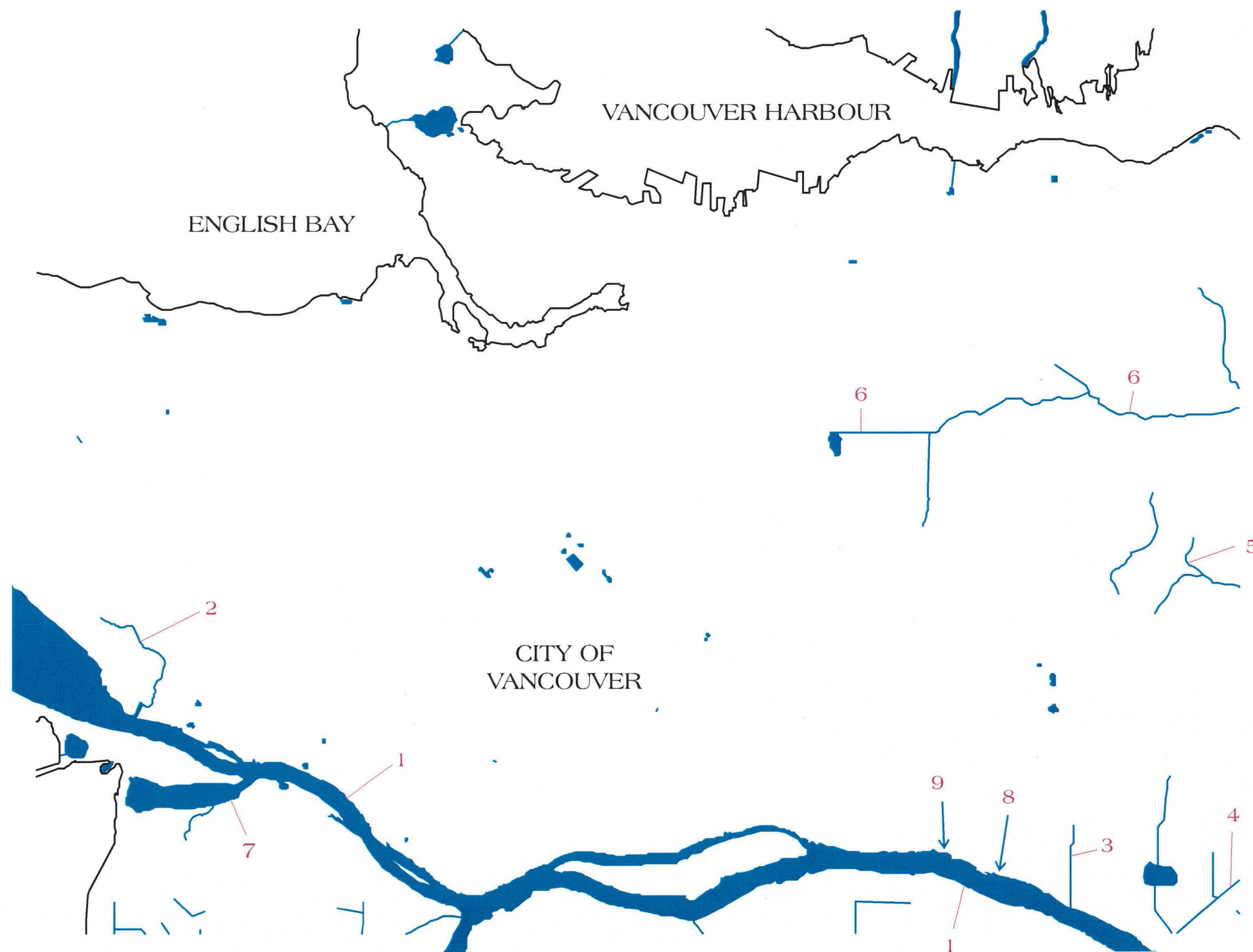
Resource Information to Protect  
Fish Bearing Streams

# 92G024

April 20, 1998






# VANCOUVER AREA



1000 0 2500 5000 meters

## Legend

-  Coastline & International Boundary
-  Streams / Rivers
-  Lakes

- 1 Fraser River
- 2 Musqueam (Tin Can) Creek
- 3 Sussex Creek
- 4 Byrne Creek
- 5 Deer Lake Creek
- 6 Still Creek
- 7 McDonald Slough
- 8 Kaymar Creek (?)
- 9 Fraserview (Vivian) Creek (?)

*Note:*

? = mouth of unmapped stream

This map was produced from the digital 1:50,000 BC Watershed Atlas, used in conjunction with FIAT (Fisheries Information Access Tool). As a result, many small tributaries have not been captured and some streams may not match the existing data pictured in the Stream Inventory Atlas. This product is intended to be used as a general index for the Stream Inventory Atlas.

**Lower Fraser River  
STREAM INVENTORY ATLAS**

Stream Name Index

92G025